



SAILING INSTRUCTIONS

2023 DISCOUNT YACHTING WINTER SERIES

2023 NOVICE RETURN SERIES



Photo: Steb Fisher

Winter Series
ORCV Bay Racing



Version 1.04 Final

Printed at 10:56 PM on 7-Aug-23

AMENDMENTS

Number	Instructions Changed	Summary of Amendment
NTC-2	App C4.2, C4.3	Revised Courses 1&2
NTC-2	App D	Added new WS-ORCV1 and SW-ORCV2 virtual marks
NTC-3	4.1 & 4.2	Added three racing divisions
NTC-5	Appendix C	Changes to Fixed Marks Course 2. Changed Fixed marks Course diagrams and finish to Sandringham Yacht Club
NTC-5	Appendix D	Added SYC6
NTC-5	Appendix E, E9	Deleted E9.1 (Spoil Ground shortened course)
NTC-6	Various	WS2 date change, Fixed Marks courses finish line clarification, FM Course 2 change, NRS course changes (keeping clear of shipping channel)
NTC-8	C3.2 & C3.7	Geelong Courses 41 and 46 changes

Copyright © Ocean Racing Club of Victoria, Inc 2023

All enquiries to:

Ocean Racing Club of Victoria, Inc
3 Aquatic Drive
ALBERT PARK VIC 3206
Australia



ORCV Geelong Race - © Drew Malcolm / Royal Geelong Yacht Club

SAILING INSTRUCTIONS

THE 2023 ORCV DISCOUNT YACHTING WINTER SERIES (**WS**) AND NOVICE RETURN SERIES (**NRS**) WILL BE CONDUCTED ON THE WATERS OF PORT PHILLIP AND CORIO BAY. BOTH SERIES ARE ORGANISED AND CONDUCTED BY THE OCEAN RACING CLUB OF VICTORIA INC (ORCV), WITH THE CO-OPERATION OF THE ROYAL BRIGHTON YACHT CLUB, ROYAL GEELONG YACHT CLUB AND BLAIRGOWRIE YACHT SQUADRON.

JUST BEFORE THE FIRST FIXED MARKS RACE, ON **SATURDAY 24 JUNE 2023**, THERE WILL BE AN ON WATER DISTRESS FLARE PRACTICE DRILL. DETAILS OF THE DRILL WILL BE PROVIDED VIA A NOTICE TO COMPETITORS.

1. RACE PROGRAM

1.1. Races are scheduled to be sailed as follows:

Race	Date	First Warning	Sunset	Course Type
WS Race 1	Saturday 24 June 2023	1025	1708	Fixed Marks
WS Race 2	Saturday 2 September 2023	0925	1714	Destination, Blairgowrie
NRS Race 1	Sunday 2 September 2023	0925	1715	Novice Return from Blairgowrie
WS Race 3	Saturday 22 July 2023	1025	1724	Fixed Marks
WS Race 4	Saturday 19 August 2023	0925	1747	Destination, Geelong
NRS Race 2	Sunday 20 August 2023	0925	1748	Novice Return from Geelong

2. RULES

2.1. The Races will be governed by the current versions of:

- The 2021-2024 Racing Rules of Sailing (RRS) of World Sailing (WS).
- The Prescriptions and Special Regulations of Australian Sailing (AS).
- The Special Regulations of the ORCV.
- Where a yacht is entered under AMS, the rules and regulations of the Australian Measurement System (AMS).
- Where a yacht is entered under ORC, the rules and regulations of the Offshore Rating Congress (ORC).
- The International Regulations for Preventing Collisions at Sea.
- The Notice of Race,

except as amended by these Sailing Instructions.

2.2. All times in these Sailing Instructions are Australian Eastern Standard Time (AEST) unless otherwise stated.

3. NOTICES TO COMPETITORS

3.1. Notices to competitors will be posted on the ORCV website www.orcv.org.au.

3.2. Any changes to these Sailing Instructions will be:

- Posted on the ORCV website before **0700** on the day of the relevant Race.
- Advised to competitors on VHF Channel **82** at the commencement of the Sign-On Schedule for the relevant Race (see Appendix A Race Communications).

4. CLASS FLAG

- 4.1. The Race Director may allocate racing yachts to two Divisions. By **1900** on the evening before each Race, the following information in respect of the relevant Race will be published on the ORCV website.
- The Race will **not** be run with racing Divisions.
 - OR
 - The Race **will** be run with two racing Divisions and the allocation of yachts to racing Divisions 1 and 2 will be specified.
- 4.2. Where the Race **is** being run with two racing Divisions, the Class Flags will be Romeo (**R**), Echo (**E**) and Whiskey (**W**) for Divisions **1, 2** and **3** respectively.
- 4.3. Where the Race is **not** being run with two racing Divisions, the Class Flag will be Romeo (**R**).
- 4.4. In addition, the two **Destination** Races **may** have the following special Divisions.

Division	Code Flag	
MultiHull Racing	Tango	T
Cruising Non Spinnaker	Victor	V

5. THE START

- 5.1. The Start for each Race is specified in Appendix B Start.

6. THE COURSE

- 6.1. The Course for each Race is specified in Appendix C Courses.

7. THE FINISH

- 7.1. The Finish for each Race is specified in Appendix E Finish.

8. DECLARATIONS

- 8.1. Written declarations are generally not required, except as specified in Safety Regulations, Virtual Marks and Cruising below. A yacht correctly passing through the Finishing Line is deemed to have made a declaration on the part of her skipper that to the best of the skipper's knowledge no Rules have been breached during a Race.
- 8.2. If a skipper is uncertain as to whether any Rule has been breached, he or she shall report the circumstances in writing to ORCV by **1200** on the **Monday** following the relevant Race.

9. TIME LIMIT

- 9.1. The Time limit for all yachts in a Destination Race shall be **Sunset**. For the purposes of these Races, the time of Sunset will be as listed in the Race Program above. Any yacht that has not finished by Sunset shall be scored DNF (amends RRS 35).
- 9.2. For the Fixed Marks and Novice Return Races, the Time Limit for the first yacht to finish will be **1600**. If the first yacht finishes within this Time Limit, the Time Limit for all other yachts shall be extended to **1700**. Any yacht that has not finished by the Time Limit shall be scored DNF (amends RRS 35).

10. PROTESTS & REQUESTS FOR REDRESS

- 10.1. Subject to Clause 10.4 below, any protest or request for redress shall be lodged by email or SMS to the Race Director within **1 hour** of the finish of the last boat.
- 10.2. Subject to Clause 10.4 below, a yacht intending to protest or request redress shall inform the Race Director by phone or radio within **1 hour** of her finishing the Race giving any details as may be known at the time.
- 10.3. Any protests or requests for redress will be heard at a time and place to be advised.
- 10.4. Any request for redress involving the official time sheet shall be submitted as soon as possible after the posting of the results but no later than **1200** on the **Monday** following the relevant Race:-
- 10.5. The Protest Committee shall not be entitled to abandon any Race as a consideration for redress (amends RRS 64.2).

11. PENALTY SYSTEM

- 11.1. If, after a protest and hearing, a yacht is found to have infringed a Rule, the Protest Committee may disqualify or otherwise penalise the yacht in accordance with the provisions of RRS 64.
- 11.2. The Protest Committee may apply a time penalty for a breach of a Rule or the Sailing Instructions, declared by an infringing competitor without a hearing, or after a hearing if a protest is contested.
- 11.3. The following penalties will be applied for breaches of these Sailing Instructions or the Racing Rules of Sailing (RRS), including any modification noted in the Notice of Race, at the discretion of the Protest Committee:
 - For a minor infringement: **10 Minutes**
 - For a significant infringement: **30 Minutes**
 - For a serious infringement – the penalty will rest with the Protest Committee and may result in a time penalty or disqualification.
- 11.4. All penalties shall be noted on the time sheet and shall be applied to finishing times. Yacht positions will be adjusted after penalties are applied (This complements RRS 64.1 and amends RRS 44.3).

12. YACHTS RETIRING

- 12.1. Yachts retiring shall inform the Race Director as described in Appendix A Yachts Retiring.

13. SAFETY REGULATIONS

- 13.1. The Safety Category and regulations are as set out in the Notice of Race.
- 13.2. The ORCV strongly recommends that safety harnesses and suitable lifejackets be worn whenever conditions warrant, particularly in rough weather, at night or when sailing short-handed.
- 13.3. The crew of yachts sailed Double Handed shall wear lifejackets at all times when on deck.
- 13.4. In particular, attention is drawn to Victorian regulations which stipulate the mandatory wearing of lifejackets when on deck during times of heightened risk. This includes, sailing at night and when the weather or weather forecast indicates heightened risk. For full details, consult the Transport Safety Victoria website (www.transportsafety.vic.gov.au).
- 13.5. Yachts shall keep clear of all commercial shipping (vessels more than 35 metres in length) while within Port Phillip, as required by Ports Victoria Harbour Master's Directions.
- 13.6. In the event of avoiding action becoming necessary, a yacht may start her engine and motor to avoid a shipping hazard, on a course perpendicular to the ship's track, for as long as necessary.

- 13.7. A yacht that takes such action shall return to the location she started motoring, cease motoring and resume racing as soon as possible. The details of any such action shall be reported to the Race Director, as a Race Declaration, within **1 hour** of the yacht finishing.
- 13.8. Any yacht found to have impeded the progress of a commercial vessel will be disqualified.
- 13.9. A yacht or her equipment may be inspected at any time for compliance with the ORCV safety rules and Sailing Instructions.
- 13.10. The Race Director may, at her or his absolute discretion, disqualify a yacht from participating or continuing to participate in any Race in either Series if the Race Director believes that it is unsafe for that yacht to commence or continue to race.

14. EXCLUSION ZONES AND HAZARDS

- 14.1. Yachts shall keep well clear of Mussel Spat Culture zones and use appropriate caution to avoid the sand bar outside the line of the Hopetoun Channel between piles 3 and 9.
- 14.2. The Point Wilson Explosives Pier is surrounded by a total exclusion zone of 300 metres. A fine of up to \$10,000 may be imposed for entry to this area, accidental or not. The area is under constant video surveillance and competitors shall make themselves aware of the exact zone limits.
- 14.3. Yachts shall keep clear of all commercial shipping including when sailing inside or transiting any shipping channels.

15. UNSUITABLE CONDITIONS

- 15.1. After commencement of any Race in either Series, the Race can be terminated at the Race Director's discretion.
- 15.2. The Race Committee may deem such a Race to be abandoned, rescheduled to another time or shortened. Arrangements for shortening course are detailed in Appendix C Courses.
- 15.3. Prorated positions may be used to determine a result for each Race and for each Series.
- 15.4. Any termination of a Race in either Series will be advised by radio on VHF Channel **82**. In addition, the Race Director may advise any race termination by SMS.

16. RACE COMMUNICATIONS

- 16.1. Race communications procedures are detailed in Appendix A Race Communications..

17. DISCLAIMER OF LIABILITY

- 17.1. All those taking part in any Race in either Series do so at their own risk and responsibility.
- 17.2. Acceptance of a yacht as an entrant in any Race in either Series is not to be taken as express or implied acceptance on the part of the ORCV and/or any of its Flag Officers, committee members, volunteers, Equipment Auditors or any other members, of the fitness of any yacht or any equipment on such yacht to safely compete in the race, and/or deal with any and all eventualities of the contemplated passage. It is the responsibility of each skipper of each competing yacht to decide whether his/her yacht is fit and suitably crewed for the intended purpose, and neither the ORCV nor any club, person or company connected with the organisation of the Races and Series is responsible for the seaworthiness of any yacht whose entry is accepted.
- 17.3. Attention is drawn to Fundamental Rule 3 "Decision to Race" of the RRS which states:

The responsibility for a boat's decision to participate in a race or to continue racing is hers alone.

18. CREW BEHAVIOUR

- 18.1. All participants are reminded that they are required to comply with the Australian Sailing member protection policies described in www.sailingresources.org.au/clubresources/memberprotection/.
- 18.2. Skippers are reminded that crew behaviour is their responsibility at all times, including during any post-race celebrations.

19. APPENDICES

- 19.1. The following Appendices form part of these Sailing Instructions.

Appendix A RACE COMMUNICATIONS

THIS APPENDIX DESCRIBES THE RADIO AND OTHER COMMUNICATIONS PROCEDURES TO BE FOLLOWED DURING EACH RACE IN EITHER SERIES.

A1 GENERAL

- A1.1 While racing, a yacht shall neither make nor receive radio communications not available to all yachts. This restriction also applies to mobile phones and satellite phones.
- A1.2 Where a yacht is fitted with an AIS transponder, the transponder shall be switched on in transmit mode with boat name and MMSI displayed at all times during any Race.
- A1.3 Failure to sign on before the end of the Sign-On Schedule shall result in the yacht being scored **DNC**.
- A1.4 Yachts shall not give false or misleading position reports.

A2 SUMMARY – FIXED MARKS RACES

SUMMARY OF FIXED MARKS TABLE			
Time	Action	Channel	Station
0700	SMS Sign-On Requests Sent		
0830	SMS Sign-On Responses Complete		
0945 - 1005	Radio Sign-On Schedule Alterations to Sailing Instructions Course number to be sailed Postponement if applicable	VHF Channel 82	Ocean Racing
1025 - 1030	Starting Sequence	VHF Channel 82	
1030	Individual recalls may be notified	VHF Channel 82	
Monitor	Unscheduled Announcements	VHF Channel 82	
	Shortened course, if applicable		
	Retirement, if applicable	VHF Channel 82 0418 396 605	Ocean Racing Race Director
Finish - 5	Approximately 5 minutes from finish	VHF Channel 82	Ocean Racing

A3 SUMMARY – DESTINATION RACES

Time	Action	Channel	Station
0700	SMS Sign-On Requests Sent		
0830	SMS Sign-On Responses Complete		
0845 - 0905	Radio Sign-On Schedule Alterations to Sailing Instructions Geelong course number Postponement if applicable	VHF Channel 82	Ocean Racing
0925 - 0930	Starting Sequence	VHF Channel 82	
0930	Individual recalls may be notified	VHF Channel 82	
Monitor	Unscheduled Announcements	VHF Channel 82	
	Shortened course, if applicable		
	Retirement, if applicable	VHF Channel 82 0418 396 605	Ocean Racing Race Director
Abeam PR18	Abeam Point Richards Mark 18 for Geelong Destination Race.	VHF Channel 82	Ocean Racing
Abeam SC19	Abeam South Channel Mark 19 for Blairgowrie Destination Race.	VHF Channel 82	Ocean Racing
Finish - 5	Approximately 5 minutes from finish	VHF Channel 82	
Berthing	At destination Club	VHF Channel 73	

A4 SUMMARY – NOVICE RETURN RACES

Time	Action	Channel	Station
0700	SMS Sign-On Requests Sent		
0830	SMS Sign-On Responses Complete		
0845 - 0905	Radio Sign-On Schedule Alterations to Sailing Instructions Postponement if applicable	VHF Channel 82	Ocean Racing
0925 - 0930	Starting Sequence	VHF Channel 82	
0930	Individual recalls may be notified	VHF Channel 82	
1335	Position reporting schedule	VHF Channel 82	
Monitor	Unscheduled Announcements	VHF Channel 82	
	Shortened course, if applicable		
	Retirement, if applicable	VHF Channel 82 0418 396 605	Ocean Racing Race Director
Finish - 30	Approximately 30 minutes from finish	VHF Channel 82	Ocean Racing

Time	Action	Channel	Station
Finish - 5	Approximately 5 minutes from finish	VHF Channel 82	

A5 RACE CHANNELS

A5.1 Station name: *Ocean Racing*

A5.2 VHF channels to be used will be taken from the following table.

Channel	Usage
82	<ul style="list-style-type: none"> • Radio Sign-On for entrants where SMS sign-on failed. • Radio Sign-On for Novice Return Race entrants • Starting sequence • Individual recalls • Race monitoring • Unscheduled announcements • Shortened course • Position reports for Novice Return Race entrants • Finishing reports • Additional finishing reports for Novice Return entrants • Monitor when finishing
16	Emergency, Calling (all yachts shall monitor continuously)
67	Working, Maritime Safety Information
73	Berthing assistance at Blairgowrie and Geelong

A5.3 While racing, yachts shall monitor VHF Channels **16** and **82**, unless actively using one of the other channels.

A5.4 If standing by on another VHF channel, yachts shall still maintain a continuous listening watch on VHF Channel 16 by a suitable method such as dual watch or scanning or multiple radios.

A5.5 VHF Channel 82 is a repeater located on Arthurs Seat. Yachts should ensure that VHF radios are set to the International frequency set, standard in Australia, when using this channel.

A5.6 Phone numbers to be used will be taken from the following table.

Number	Usage
0418 396 605	Race Director's Phone Emergencies

A5.7 Email addresses to be used will be taken from the following table.

Email Address	Usage
Race.Director@orcv.org.au	Race Director messages

A6 SIGN ON SCHEDULE

A6.1 All yachts are required to sign on to indicate their intention to race and the number of persons on board by SMS. Yachts which fail to sign on by **0830** will be called on VHF radio. In addition, yachts in the Novice Return Series shall also sign on via VHF.

A6.2 Around **0700** an SMS message will be sent to the mobile number registered for each yacht, asking if the yacht intends to race. Each yacht intending to race shall follow the link in the SMS and respond to the questions presented to indicate whether she will be racing or not and, if so, how many persons will be on board. All responses shall have been sent by **0830**.

- A6.3 A radio Sign-On Schedule will be conducted by Ocean Racing on VHF Channel **82** for all yachts that have not signed on using the SMS message system. All yachts shall monitor this Schedule in case their SMS sign on response has not been received.

Race Type	Sked Start Time	Sked End Time
Fixed Marks	0945	1005
Destination	0845	0905
Novice Return	0845	0905

- A6.4 Yachts who have not completed an SMS Sign-On, and all entrants in a Novice Return Race, will be called in alphabetical order to confirm that they are starters in each Race. Each yacht shall respond:

- *{Yacht Name} is a starter, {xx} persons on board, Over.*

- A6.5 A yacht that does not respond on the first call shall wait until she is called again at the end of the Schedule.

- A6.6 In the event of late crew additions, crew names and phone numbers shall be added to the yacht's crew list using the TopYacht race entry system.

- A6.7 If there are any late crew changes (additions or removals), these shall be advised to the Race Director as part of the VHF sign-on process.

- A6.8 Any changes to Sailing Instructions will be announced on VHF Channel **82** at the commencement of the Sign-On Schedule.

- A6.9 Any variations to the course to be sailed, such as a relocated Starting Line, and, where applicable, the Course Number to be sailed, will also be announced as part of the Sign-On Schedule.

A7 PREMATURE STARTERS

- A7.1 Premature starters may be identified on VHF Channel **82**.

A8 VHF POSITION REPORTING SCHEDULES

- A8.1 For entrants in a Novice Return Race, Position Reporting Schedules will be conducted, on VHF Channel **82**, by Ocean Racing at the following times (Reporting Time):

Position Time	Reporting Time
1330	1335

The position reported will be the yacht's position at the time listed in the Position Time column.

- A8.2 Each yacht shall report her position in degrees and whole minutes only of Latitude and Longitude.

- *{Yacht Name} Position {ddmm dddmm} OVER*

- A8.3 Schedules will continue until each yacht has crossed the Finishing Line or otherwise retired and reached a safe harbour.

- A8.4 Scheduled Position Reporting is not required after a yacht has made her "30 minutes from finish" call.

A9 APPROACHING THE FINISH

- A9.1 Each yacht in the Blairgowrie Destination Race shall call the Race Director on VHF Channel **82** when directly south of South Channel Mark 19.

- A9.2 Each yacht in the Geelong Destination Race shall call the Race Director on VHF Channel **82** when directly south of Point Richards Mark 18.

- A9.3 Each yacht in a Novice Return Race shall call the Race Director on VHF Channel **82** when approximately **30** minutes from the Finish.

A9.4 Each yacht shall call the Race Director on VHF Channel **82** when approximately **5** minutes from the Finish.

A10 YACHTS RETIRING

A10.1 If a yacht retires from a Race, every effort shall be made to advise *Ocean Racing* as soon as possible, and certainly within **10 minutes** of retirement, providing the following information:

- Time & position at the time of retirement
- Reason for retirement
- The state of the crew
- The port to which the yacht is returning.

A10.2 VHF Channel **82** has coverage right down the Bay and should be used for this purpose.

A10.3 A yacht that retires shall maintain her continuous monitoring of VHF Channels **82** and **16** until such time as she reaches a safe harbour.

A10.4 Upon arrival at a safe harbour, contact shall be made, within **1 hour**, with the Race Director by phone (**0418 396 605**) or VHF Channel **82** to confirm safe arrival. Failure to comply with this requirement may prejudice acceptance of an entry in future races.

Appendix B START

THIS APPENDIX CONTAINS INFORMATION ABOUT THE STARTING LINES AND THE STARTING PROCEDURES.

B1 START TIME AND LOCATION

- B1.1 The Start Time and Location will be as per the table below, always allowing the Race Director, at their discretion, to postpone to another time.
- B1.2 For the Novice Return Races, the Race Director may start the Race at one of the intermediate course marks. In this case, the Race Director will advise the revised Start Location, with a correspondingly later Start Time, during the Sign-On Schedule.

Race	Date	Start Time	Start Location
WS Race 1	Saturday 24 June 2023	1030	Near RBYC
WS Race 2	Saturday 2 September 2023	0930	Near RBYC
NRS Race 1	Sunday 3 September 2023	0930	Blairgowrie
WS Race 3	Saturday 22 July 2023	1030	Near RBYC
WS Race 4	Saturday 19 August 2023	0925	Near RBYC
NRS Race 2	Sunday 20 August 2023	0930	Geelong

B2 STARTING LINE – DESTINATION AND FIXED MARKS

- B2.1 The Starting Location will be in the vicinity of the RBYC Breakwater.
- B2.2 The Starting Line will be between a staff displaying an orange flag on the Committee Vessel at the starboard end and an orange cylindrical buoy at the port-end.
- B2.3 A crowding buoy may be laid in the vicinity of the Committee Vessel.
- B2.4 When the Committee Vessel is on station, after the Preparatory Signal, and before correctly starting:
- Any yacht touching the crowding buoy or passing from the pre-start side of the Starting Line to the course side between the crowding buoy and the Committee Vessel shall return to the pre-start side of the line by passing to the course side of and around the Committee Vessel before starting correctly.
 - Any yacht passing from the course side to the pre-start side of the starting line between the crowding buoy and the Committee Vessel may be disqualified.

B3 STARTING LINE – BLAIRGOWRIE RETURN

- B3.1 The Starting Line will be the same as the Finishing Line for the Blairgowrie Destination Race.
- B3.2 Yachts shall start in a South Easterly direction.

B4 STARTING LINE – GEELONG RETURN

- B4.1 The Starting Line will be between RGYC Buoy CB3 and Hopetoun Channel Marker 12.
- B4.2 The Starting Line may be relocated to a position adjacent to any of the following marks of the Course:

- Hopetoun Channel Marker 4
- Wilson Spit Channel Marker 10
- Wilson Spit Channel Marker 4
- Wilson Spit Channel Marker 2

B5 START PROCEDURE

- B5.1 Each Race will be started in accordance with RRS 26, except that some flares may be used as well as sound signals.
- 5 minutes: Warning signal, one sound, white flare
 - 4 minutes: Preparatory signal, one sound
 - 1 minute: One-minute signal, long sound
 - **Start:** Starting signal, one sound, green flare

This changes RRS 26.

- B5.2 Times shall be taken from the flag signals; failure of a flare or sound signal shall be disregarded.
- B5.3 Individual recalls will be signalled by code flag **X** and may be accompanied by one sound and one white flare.
- B5.4 Premature starters may be identified on VHF Channel **82** (see Appendix A Race Communications). This amends RRS 29.1.
- B5.5 There will be no General Recall. This amends RRS 29.2.

B6 POSTPONEMENTS

- B6.1 Any postponement shall be signalled by displaying the Answering Pennant with one sound.
- B6.2 One minute before a postponed starting sequence commences, the Answering Pennant shall be lowered with one sound. This amends RRS 27.3.
- B6.3 A postponement may apply if a Bureau of Meteorology Gale Warning is forecast for any part of the course.
- B6.4 Any postponements will be announced on VHF Channel **82** before the Sign-On Schedule. If the timing is appropriate, an SMS may also be sent to each yacht on their primary registered contact phone. (amends RRS 27.3).

Appendix C COURSES

THIS APPENDIX DESCRIBES THE COURSES AND HOW THEY ARE TO BE SAILED.

IF A PHYSICAL MARK IS NOT PRESENT, YACHTS SHALL ROUND A VIRTUAL MARK LOCATED AT THE COORDINATES SPECIFIED IN APPENDIX D MARKS AND DECLARE THIS TO THE RACE DIRECTOR.

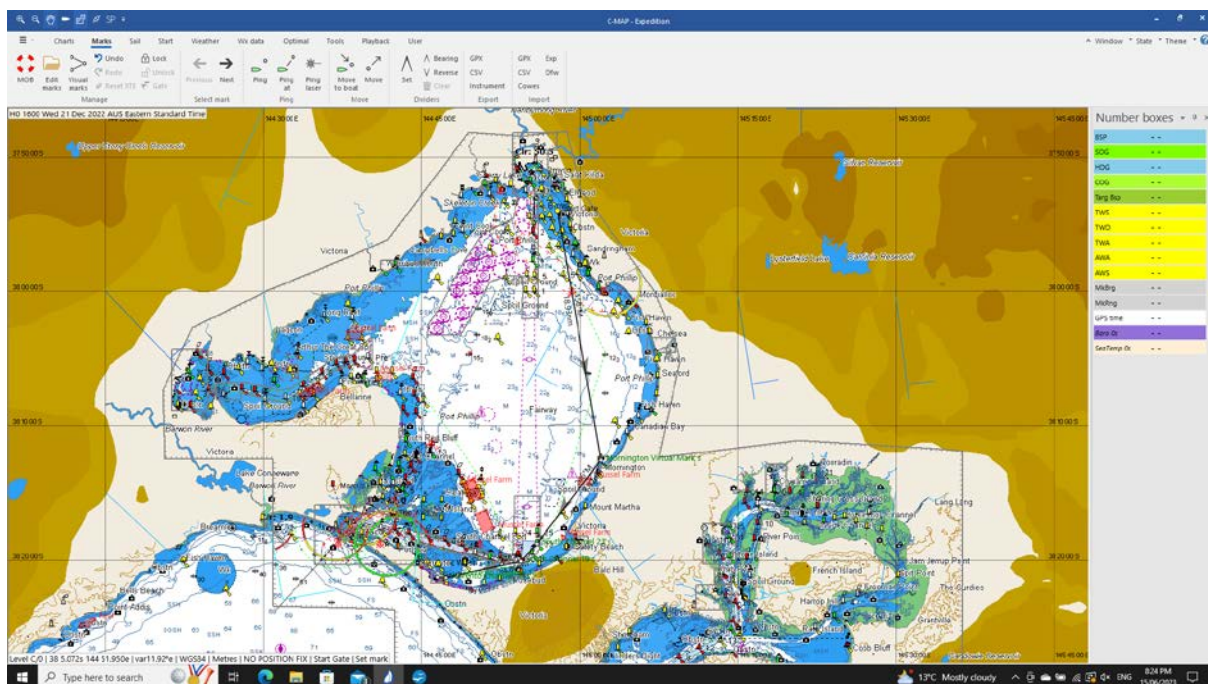
C1 COURSE DETAILS –GENERAL

C1.1 A windward gate will be laid approximately 1 to 1.5 nm from the Starting Line near RBYC.

C2 COURSE DETAILS –DESTINATION RACE – BLAIRGOWRIE

This course is approximately 35 nm in length.

Mark Name	Round Mark to
Start	N/A
Gate	N/A
Mornington Virtual Mark	Starboard
South Channel 25	Starboard
South Channel 19	Starboard
Sorrento Channel 12	Starboard
Sorrento Channel 10	Starboard
Finish at Blairgowrie	N/A



C3 COURSE DETAILS –DESTINATION RACE - GEELONG

C3.1 There are multiple course options for this Destination Race.

C3.2 Geelong Destination Course 41

This course is approximately **34** nm in length.

Mark Name	Round Mark to
Start	N/A
Gate	N/A
Fawkner Beacon	Starboard
Point Richards 1	Starboard
Point Richards 18	Starboard
Wilson Spit 9	Port
Hopetoun Channel 1	Port
Hopetoun Channel 10	Port
Finish at RGYC	N/A

C3.3 Geelong Destination Course 42

This course is approximately **46** nm in length.

Mark Name	Round Mark to
Start	N/A
Gate	N/A
Carrum 2	Starboard
Point Richards 1	Starboard
Point Richards 18	Starboard
Wilson Spit 9	Port
Hopetoun Channel 1	Port
Hopetoun Channel 10	Port
Finish at RGYC	N/A

C3.4 Geelong Destination Course 43

This course is approximately 56 nm in length.

Mark Name	Round Mark to
Start	N/A
Gate	N/A
R1	Starboard
Prince George	Port
Point Richards Entrance	Port
Point Richards 1	Starboard
Point Richards 18	Starboard
Wilson Spit 9	Port
Hopetoun Channel 1	Port
Hopetoun Channel 10	Port
Finish at RGYC	N/A

C3.5 Geelong Destination Course 44

This course is approximately 52 nm in length.

Mark Name	Round Mark to
Start	N/A
Gate	N/A
Carrum 2	Starboard
P2	Port
Point Richards 1	Starboard
Point Richards 18	Starboard
Wilson Spit 9	Port
Hopetoun Channel 1	Port
Hopetoun Channel 10	Port
Finish at RGYC	N/A

C3.6 Geelong Destination Course 45

This course is approximately **39** nm in length.

Mark Name	Round Mark to
Start	N/A
Gate	N/A
SYC5	Starboard
P2	Port
Point Richards 1	Starboard
Point Richards 18	Starboard
Wilson Spit 9	Port
Hopetoun Channel 1	Port
Hopetoun Channel 10	Port
Finish at RGYC	N/A

C3.7 Geelong Destination Course 46

This course is approximately **46** nm in length.

Mark Name	Round Mark to
Start	N/A
Gate	N/A
SYC5	Starboard
Spoil Ground	Starboard
P2	Port
Prince George	Starboard
Point Richards Entrance	Port
Point Richards 18	Starboard
Wilson Spit 9	Port
Hopetoun Channel 1	Port
Hopetoun Channel 10	Port
Finish at RGYC	N/A

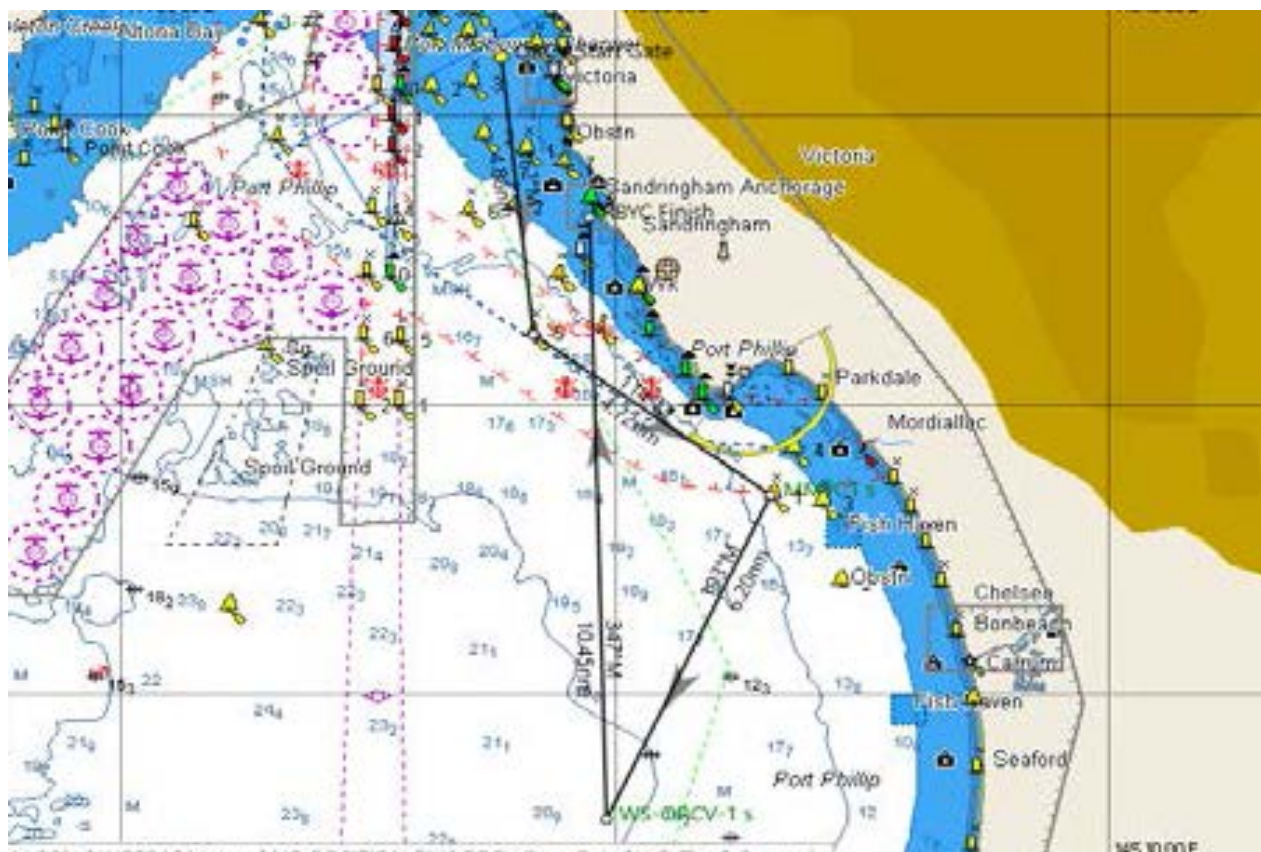
C4 COURSE DETAILS – FIXED MARKS

C4.1 There are multiple course options for the Fixed Marks Races.

C4.2 Fixed Marks Course 1

This course is approximately 28 nm in length.

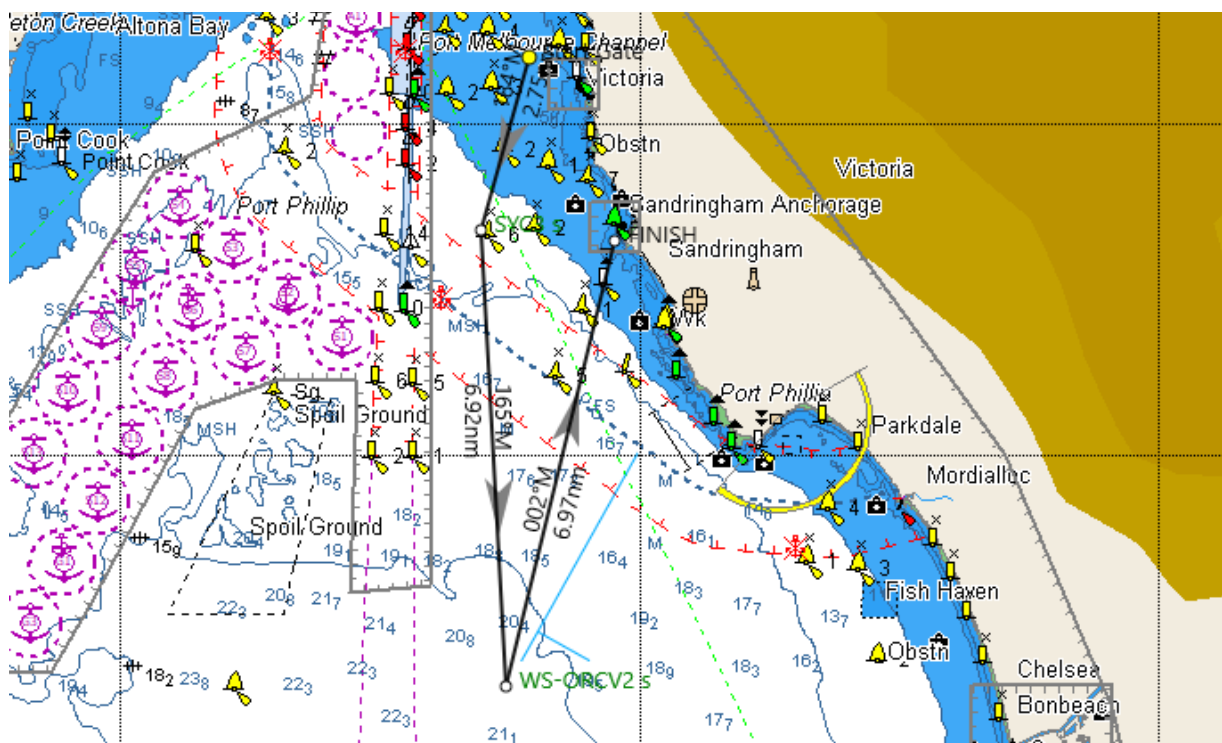
Mark Name	Round Mark to
Start	N/A
Gate	N/A
SYC5	Port
MMYC1	Starboard
WS-ORCV1	Starboard
Finish at Sandringham Yacht Club	N/A – Finish Northerly Direction



C4.3 Fixed Marks Course 2

This course is approximately 19 nm in length.

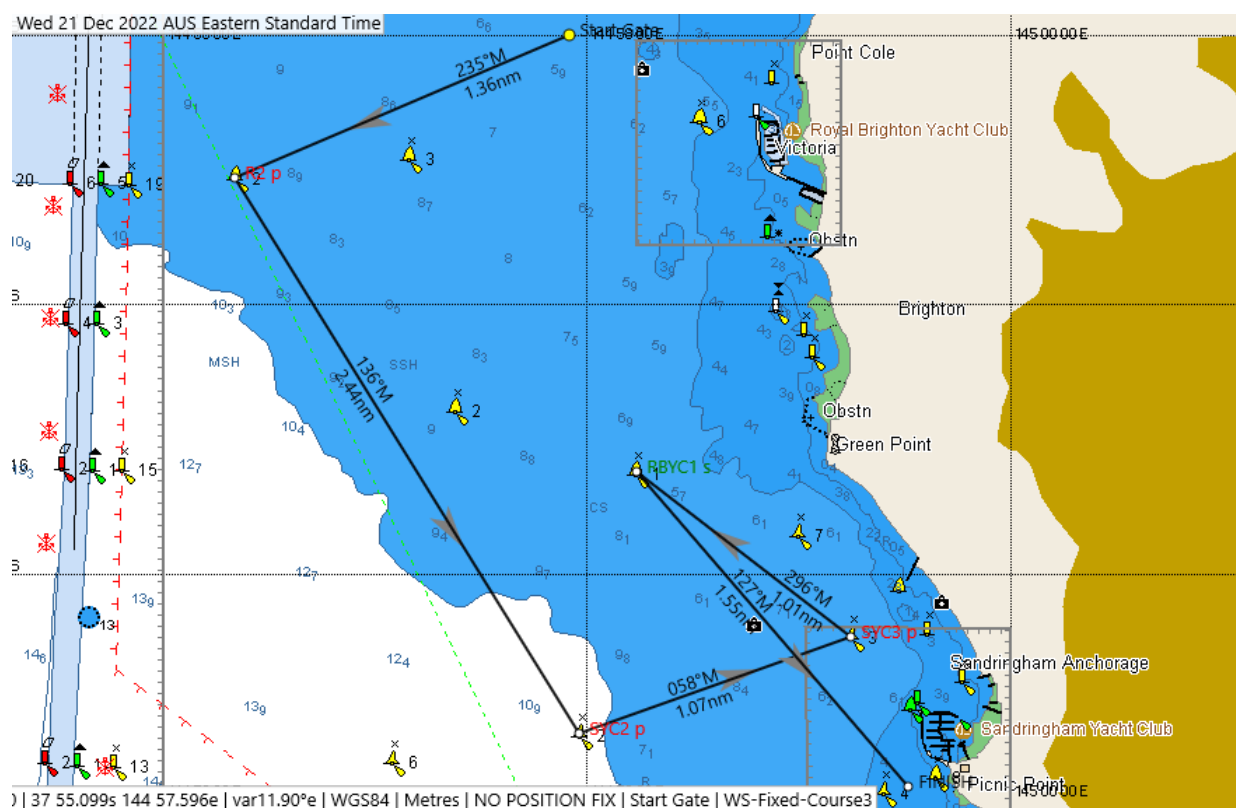
Mark Name	Round Mark to
Start	N/A
Gate	N/A
SYC6	Port
WS-ORCV2	Port
Finish at Sandringham Yacht Club	N/A – Finish Northerly Direction



C4.4 Fixed Marks Course 3

This course is approximately 7 nm in length.

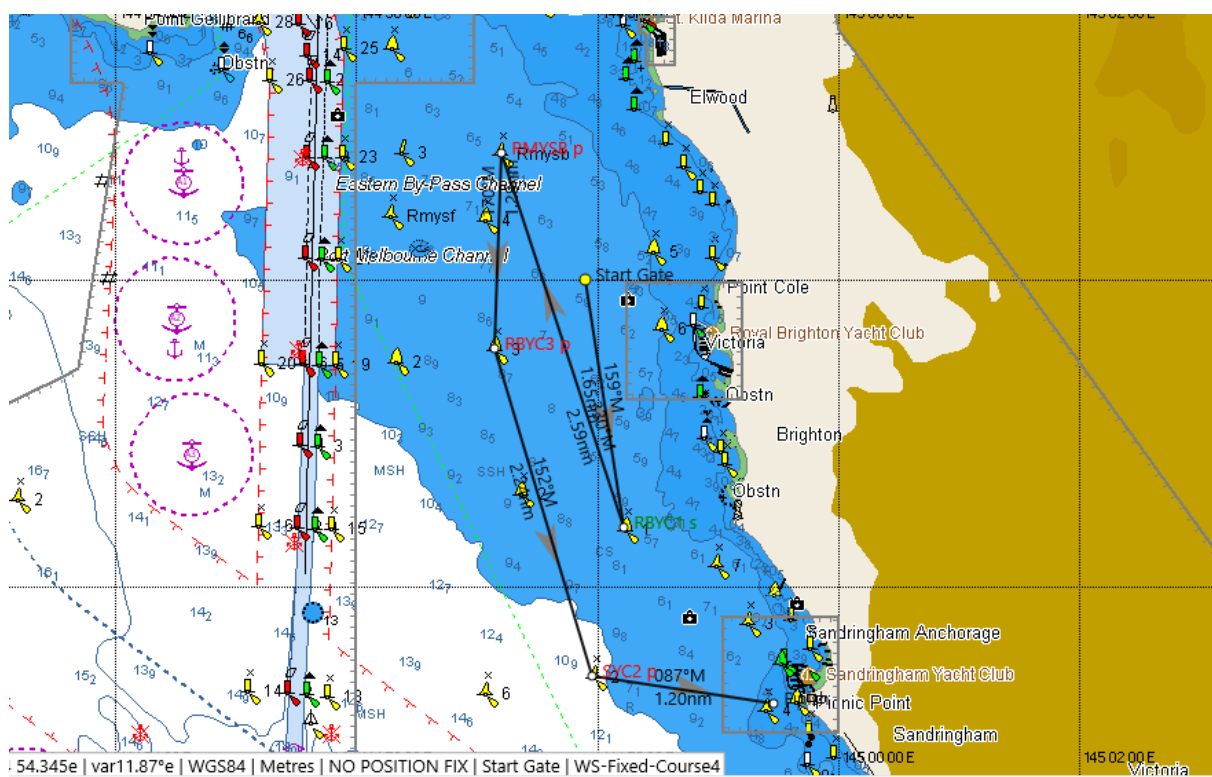
Mark Name	Round Mark to
Start	N/A
Gate	N/A
R2	Port
SYC2	Port
SYC3	Port
RBYC1	Starboard
Finish at Sandringham Yacht Club	N/A – Finish Southerly Direction



C4.5 Fixed Marks Course 4

This course is approximately 10 nm in length.

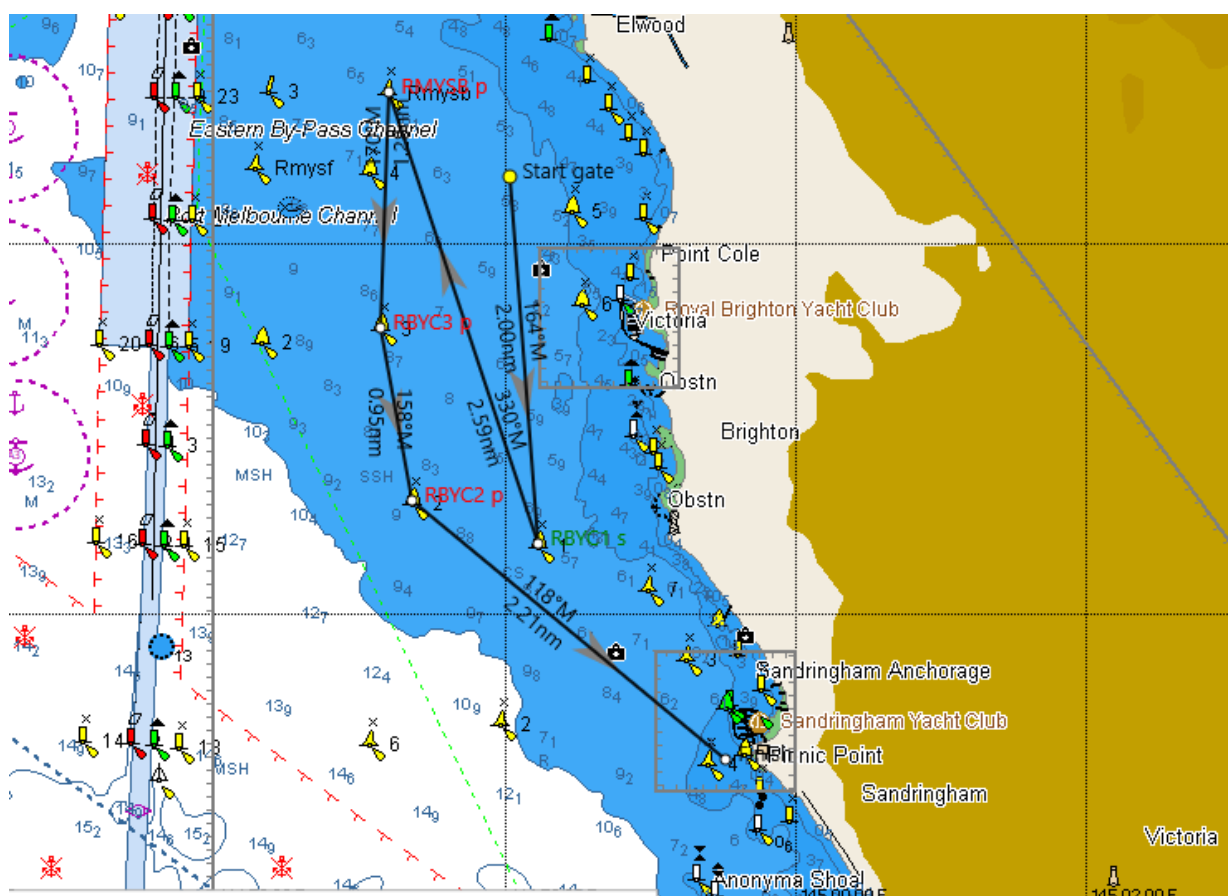
Mark Name	Round Mark to
Start	N/A
Gate	N/A
RBYC1	Starboard
RMYSB	Port
RBYC3	Port
SYC2	Port
Finish at Sandringham Yacht Club	N/A – Finish Southerly Direction



C4.6 Fixed Marks Course 5

This course is approximately 8 nm in length.

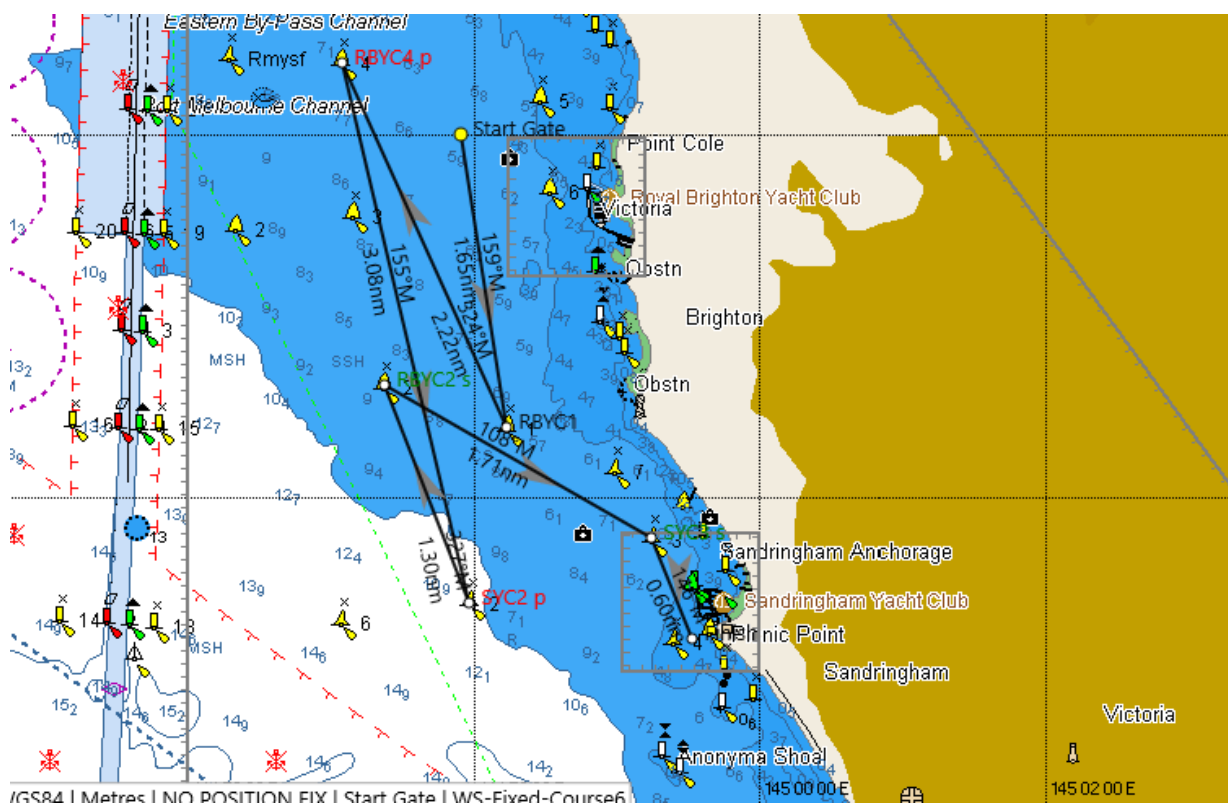
Mark Name	Round Mark to
Start	N/A
Gate	N/A
RBYC1	Starboard
RMYSB	Port
RBYC3	Port
RBYC2	Port
Finish at Sandringham Yacht Club	N/A – Finish Southerly Direction



C4.7 Fixed Marks Course 6

This course is approximately 12 nm in length.

Mark Name	Round Mark to
Start	N/A
Gate	N/A
RBYC1	Starboard
RBYC4	Port
SYC2	Port
RBYC2	Starboard
SYC3	Starboard
Finish at Sandringham	N/A – Finish Southerly Direction



C5 COURSE DETAILS – NOVICE RETURN RACE - BLAIRGOWRIE RETURN

This course is approximately 30 nm in length.

Mark Name	Round Mark to
Start	N/A
Sorrento Channel 10	Port
Sorrento Channel 12	Port
South Channel 19	Port
South Channel 21	Port
South Channel 23	Port
SYC1	Starboard
Anonyma Shoal West	Starboard (passing)
Finish at Sandringham Yacht Club	N/A – Finish Southerly Direction

C6 COURSE DETAILS – NOVICE RETURN RACE - GEELONG RETURN

This course is approximately 31 nm in length.

Mark Name	Round Mark to
Start	N/A
Hopetoun 10	Starboard
Hopetoun 4	Starboard
Hopetoun 2	Port
Wilson Spit 10	Port
Wilson Spit 4	Port
Wilson Spit 2	Port
Centre M1	Port
Finish at Sandringham Yacht Club	N/A – Finish Northerly direction

Appendix D MARKS

D1 CAVEATS

D1.1 These mark details should not be used uncritically. They have been assembled from the best information available but may only be approximate and may contain errors. Skippers and navigators should verify mark information using their own resources.

D1.2 If a Physical Mark is not present, yachts shall round a Virtual Mark located at the coordinates specified below and declare this to the Race Director.

Name	Latitude	Longitude	Flash Characteristics	Description
Anonyma Shoal West	S 37° 57.44'	E 144° 59.31'	VQ(9) YBY 10s	West Cardinal Pile
Blairgowrie 0 (Finish)	S 38° 21.26'	E 144° 46.57'	Fl(4) Y 15s	Conical, Yachting
Carrum 2	S 38° 03.07'	E 145° 04.53'	Unlit	Can, Yellow
Centre M1	S 38° 03.52'	E 144° 52.21'	FL Y 10s	Yellow Special Purpose Buoy
Fawkner Beacon	S 37° 56.92'	E 144° 55.63'	Fl W 5s 11M	Beacon Tower
Hopetoun Channel 1	S 38° 07.05'	E 144° 26.76'	F G + Iso G 4s 5M	Pile, Starboard Lateral
Hopetoun Channel 2	S 38° 07.16'	E 144° 26.78'	F R + Iso R 4s 5M	Pile, Port Lateral
Hopetoun Channel 4	S 38° 07.20'	E 144° 26.16'	R ISO R 4s	Port Lateral
Hopetoun Channel 10	S 38° 07.40'	E 144° 24.13'	Iso R 4s 5M	Pile, Port Lateral
Hopetoun Channel 12	S 38° 07.48'	E 144° 23.31'	R B N ISO R 4s 5M	Pile, Port Lateral
MMYC1	S 38° 01.59	E 145° 03.20'	Fl Y 5s	Conical, Yachting
MMYC4	S 38° 00.78'	E 145° 03.60'	Fl Y 5s	Conical, Yachting
Mornington Virtual	S 38° 12.62'	E 145° 02.01'	N/A	Virtual
P2	S 37° 55.44'	E 144° 53.19'	Fl Y 4s	Buoy, Special
Point Richards 1	S 38° 05.07'	E 144° 38.56'	F G + Iso G 4s 5M	Pile, Starboard Lateral
Point Richards 18	S 38° 07.92'	E 144° 32.08'	Q W	Pile, N Cardinal (BY)
Point Richards Entrance	S 38° 04.95'	E 144° 39.95'	Q W 9M	Pile, N Cardinal (BY)
Prince George	S 38° 06.40'	E 144° 44.20'	Fl R 4s 8M	Pile, Port Lateral
R1	S 38° 16.47'	E 144° 58.36'	Fl(3) Y 10s	Conical, Special
R2	S 37° 54.54'	E 144° 56.34'	Fl(3) Y 10s	Conical, Special
RBYC1	S 37° 55.63'	E 144° 58.24'	Fl(4) Y 12s	Conical, Yachting
RBYC2	S 37° 55.40'	E 144° 57.37'	Fl(4) Y 12s	Conical, Yachting

Name	Latitude	Longitude	Flash Characteristics	Description
RBYC3	S 37° 54.46'	E 144° 57.16'	Fl(4) Y 12s	Conical, Yachting
RBYC4	S 37° 53.61'	E 144° 57.08'	Fl(4) Y 12s	Conical, Yachting
RBYC6	S 37° 54.32'	E 144° 58.53'	Fl(4) Y 12s	Yellow Conical Buoy
RMYSB	S 37° 53.18'	E 144° 57.19'	Fl(4) Y 10s	Pillar, Yachting
Sorrento Channel 10	S 38° 21.34'	E 144° 47.31'	Unlit, Red	Pile, Port Lateral
Sorrento Channel 12	S 38° 21.11'	E 144° 48.51'	Unlit, Red	Pile, Port Lateral
South Channel 19	S 38° 20.13'	E 144° 54.48'	Fl(2) G 5s 8M	Pile, Starboard Lateral
South Channel 21	S 38° 19.49'	E 144° 55.48'	Fl(3) G 10s 8M	Pile, Starboard Lateral
South Channel 23	S 38° 18.81'	E 144° 55.95'	Fl(3) G 10s 8M	Pile, Starboard Lateral
South Channel 25	S 38° 17.93'	E 144° 55.95'	Fl(4) G 12s 8M	Pile, Starboard Lateral
Spoil Ground	S 37° 59.06'	E 144 52.99'	Fl Y 5s	Pillar, Special
SYC1	S 37° 57.80'	E 144° 58.89'	Fl(4) Y 10s	Yellow Conical Buoy
SYC2	S 37° 56.60'	E 144° 57.97'	Fl(4) Y 10s	Yellow Conical Buoy
SYC3	S 37° 56.24'	E 144° 59.25'	Fl(4) Y 10s	Yellow Conical Buoy
SYC4	S 37° 56.81'	E 144° 59.40'	Fl(4) Y 10s	Yellow Conical Buoy
SYC5	S 37° 58.81'	E 144° 58.38'	Fl(4) Y 10s	Yellow Conical Buoy
SYC6	S 37° 56.70'	E 144° 57.08'	Fl(4) Y 10s	Yellow Conical Buoy
Transit 14	S 37° 56.69'	E 144° 55.11'	VQ(4) Y 4s	Pile, Special
Wilson Spit 2	S 38° 07.80'	E 144° 31.36'	R F ISO R 4s	Port Lateral
Wilson Spit 4	S 38° 07.37'	E 144° 30.40'	R ISO R 4s	Port Lateral
Wilson Spit 9	S 38° 07.25'	E 144° 28.58'	Iso G 4s 5M	Pile, Starboard Lateral
Wilson Spit 10	S 38° 07.32'	E 144° 28.56'	R ISO R 4s	Port Lateral
WS-ORCV1	S 38° 07.21'	E 144° 59.88'	N/A	Virtual Mark
WS-ORCV2	S 38° 03.54'	E 144° 57.47'	N/A	Virtual Mark

Appendix E FINISH

THIS APPENDIX DESCRIBES THE FINISHING LINES AND THE FINISHING PROCEDURES. THE POSITIONS, FOR PHYSICAL MARKS, SHOWN IN DIAGRAMS ARE APPROXIMATE AND SHOULD NOT BE USED FOR NAVIGATION. THE POSITIONS SHOWN MAY VARY ON THE DAY.

E1 FINISHING REPORTS

E1.1 Refer to “Approaching the Finish” in Appendix A Race Communications.

E2 SHORTENED COURSE

E2.1 If the Race Director decides to shorten course, an announcement will be made on VHF Channel **82**, including identification of the new Finishing Line.

E3 FINISHING TIMES

E3.1 Unless circumstances prevent it, the Finishing Times of all yachts will be taken by the Race Director.

E3.2 As a back-up, skippers shall record their own Finishing Times, accurate to 1 second, and inform the Race Director of this time if requested.

E4 MOORING FACILITIES

E4.1 Volunteers at Blairgowrie and Geelong may use VHF Channel **73** to provide assistance with berthing.

E5 PRESENTATION

E5.1 Results will be published on the ORCV web site as soon as practicable after each Race.

E5.2 Trophies and mementos will be presented at the annual ORCV awards ceremony on a date to be announced.

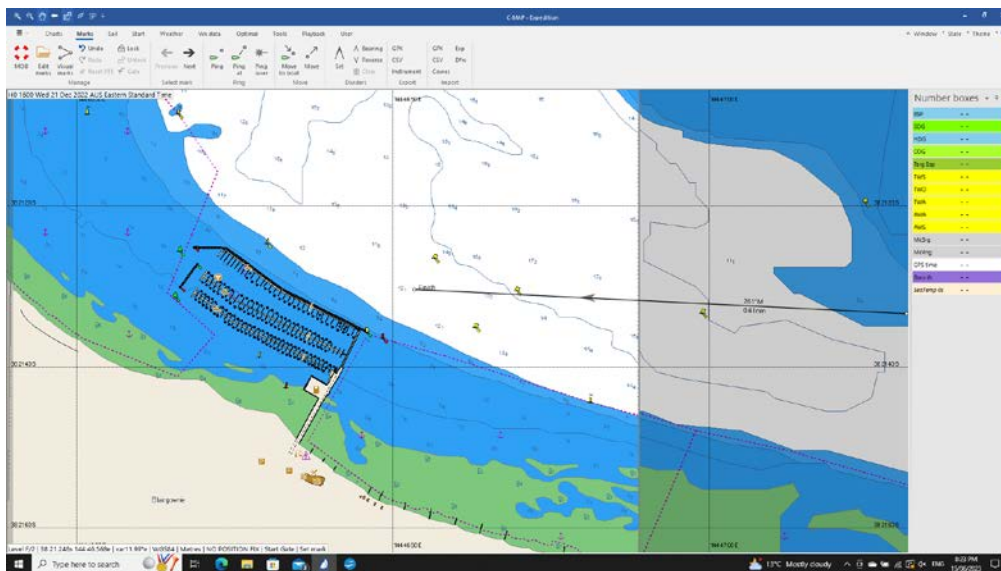
E5.3 Presentation ceremonies will be held at Blairgowrie and Geelong after each Destination Race with time and location details advised to skippers by SMS after the completion of each Race.

E6 FINISHING LINE - BLAIRGOWRIE

E6.1 The Finishing Line will be between the Day-Glo Orange Post located on the Blairgowrie Yacht Squadron Tower and BYS Mark O (BYSO).

E6.2 When finishing, yachts shall pass between the red navigation pile, adjacent to the east of the Blairgowrie Safe-Harbour, and BYSO.

E6.3 Yachts shall finish in a North Westerly direction.



E7 FINISHING LINE – BRIGHTON

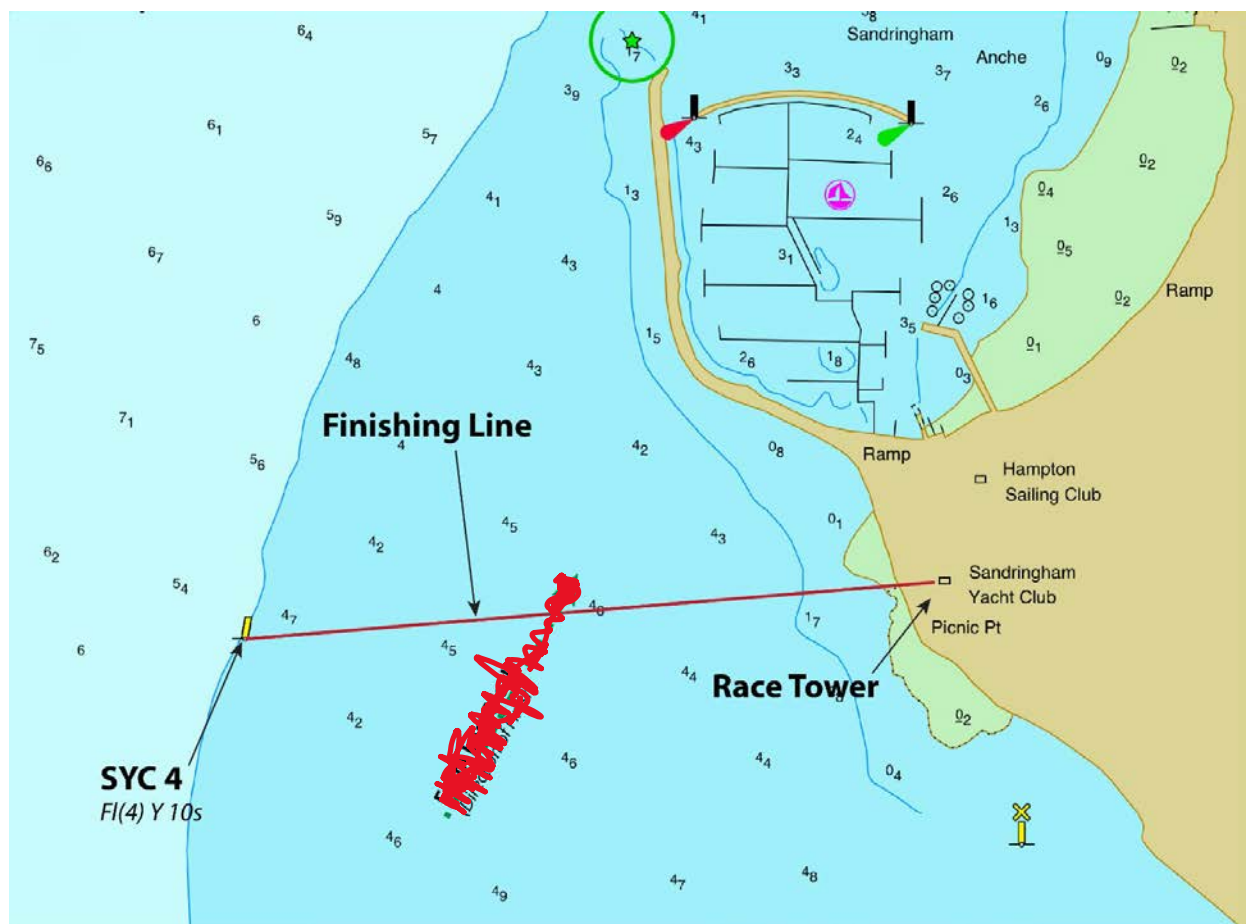
- E7.1 The Finish Line will be an imaginary line between the black vertical line on the western side of the RBYC Race Control Tower on the Brighton breakwater and a yellow special mark buoy (RBYC6) approximately 150 metres WNW of the tower.

E8 FINISHING LINE – GEELONG

- E8.1 The Primary Finishing Line will be between a staff displaying a blue flag on the Race Committee Vessel at the starboard end and a yellow cylindrical buoy at the port end, situated between 300 and 500 metres NNE of the RGYC Marina.
- E8.2 The Race Director may choose, for reasons such as shipping traffic or adverse weather, to finish the race at Wilson Spit Mark 9. In this case:
- The Race Director will inform the fleet by broadcast on VHF Channel 82.
 - A Committee Vessel will be on station.

E9 FINISHING LINE – SANDRINGHAM

- E9.1 Deleted
- E9.2 The Finishing Line shall be an imaginary line between the orange sighting indicator on the SYC Race Control Tower at the starboard end and SYC Mark 4, a yellow spar buoy located approximately 0.4 nm bearing 240° (Magnetic) from the SYC Race Control Tower (see the diagram below). A clearance mark may be laid adjacent to the breakwater and yachts approaching the Finishing Line shall leave any such clearance mark to starboard.



Appendix F CRUISING DIVISION

F1 USE OF ENGINE

- F1.1 The provisions of this Appendix apply only to competitors in the Cruising Non-Spinnaker Division during the Blairgowrie and Geelong Destination Races.
- F1.2 Competitors may use their engine for the purpose of propulsion under the following conditions:
- No earlier than 1 hour after the start of the Race.
 - **AND**
 - Where the true wind strength TWS is below 6 knots.
 - **AND**
 - Where the yacht speed over ground SOG is held to a maximum of 5 knots.
- F1.3 If the Race Director announces a Shortened Course, competitors may start engines and proceed to the Finishing Line at a SOG not exceeding 6 knots.
- F1.4 All Competitors shall declare their motoring time (in hours, minutes, and seconds) by SMS to the Race Director (**0418 396 605**) within **30 minutes** of crossing the Finishing Line.