

Sailing Instructions

2018 ORCV Women Skippers & Navigators Yacht Race



AMENDMENTS

Number	Instructions Changed	Summary of Amendment
#1 (V1.10)	Appendix C Various	Made mark and course details consistent. Updated dates for rescheduled event.

Copyright © Ocean Racing Club of Victoria Inc 2018

All enquiries to:

Ocean Racing Club of Victoria
3 Aquatic Drive
ALBERT PARK VIC 3206
Australia

SAILING INSTRUCTIONS

THE 2018 ORCV WOMEN SKIPPERS & NAVIGATORS YACHT RACE WILL BE CONDUCTED ON THE WATERS OF PORT PHILLIP AND CORIO BAY. THE RACE IS ORGANISED AND CONDUCTED BY THE OCEAN RACING CLUB OF VICTORIA (ORCV) INC WITH THE COOPERATION OF THE BLAIRGOWRIE YACHT SQUADRON AND IN CONJUNCTION WITH THE YACHTING VICTORIA WOMEN AND GIRLS IN SAILING COMMITTEE (WGISC).

1. RULES

- 1.1 The rules for the race shall be:
- the 2017 – 2020 Racing Rules of Sailing (RRS) of World Sailing (WS),
 - the Prescriptions and Special Regulations of Australian Sailing (AS),
 - the Special Regulations of the Ocean Racing Club of Victoria (ORCV),
 - as applicable the rules and regulations of the Australian Measurement System (AMS), and the IRC Rule Parts A, B and C, and
 - the Notice of Race,

except as any of the above are altered by these Sailing Instructions.

- 1.2 All times in these Sailing Instructions are Australian Eastern Standard Time (AEST) unless otherwise stated.
- 1.3 For the purpose of this race, the time of Sunset shall be 1714.

2. NOTICES TO COMPETITORS

- 2.1 Notices to competitors will be posted on the club website www.orcv.org.au.
- 2.2 Any change to these Sailing Instructions may also be posted on the club website.
- 2.3 Any alterations to these instructions will be announced to competitors on the designated race frequency (see A1.1) after the Sign On Schedule at 0835 on the day of the race.

3. CLASS FLAG

Classes/Divisions	Class Flag
Combined Classes	Whisky (W)

4. THE START

- 4.1 The start time will be 0930 on Sunday, 22 July 2018 in the vicinity on of the BYS marina allowing the Race Committee, at their discretion, to postpone to another time.

- 4.2 The starting line shall be as described in *Appendix B Starting Line*.

- 4.3 Races will be started in accordance with RRS 26.

5. THE COURSE

The description of the marks and course is given in *Appendix C Course*.

6. THE FINISH

- 6.1 The finishing line shall be as described in *Appendix D Finishing Line*.
- 6.2 Skippers will record their own finishing times, accurate to 1 second, and inform the race committee as soon as possible after finishing by SMS message to the Race Director's mobile phone (see paragraph A1.2) in the following format:

<sail no> <yacht name> <HH.MM.SS>

7. TIME LIMITS

The Time Limit for all boats shall be Sunset. Any boat finishing after this time shall be scored DNF. This changes RRS 35.

8. DECLARATION

Written declarations are not required. A boat correctly passing though the finish line is deemed to have made a declaration on the part of her skipper that to the best of his or her knowledge no rules have been breached during the race.

9. PROTESTS AND REQUESTS FOR REDRESS

- 9.1 Protests or requests for redress are to be lodged with the ORCV at:

3 Aquatic Drive
ALBERT PARK VIC 3206

Email: orcv@orcv.org.au

in accordance with the requirements of RRS Part 5 Section A, not later than 1200 on Monday, 23 July 2018.

- 9.2 Protests or requests for redress will be heard at a time and place to be advised.
- 9.3 When the protest committee decides that a boat that is a party to a protest hearing has broken a rule, it shall disqualify her or apply some lesser penalty. This changes Rule 64.1(a).
- 9.4 All requests for redress involving the official time sheet must be submitted within 4 hours of posting of the results.
- 9.5 The protest committee shall not be entitled to abandon the race as a consideration for redress (This amends RRS 64.2).

10.SAFETY REGULATIONS

- 10.1 The Safety Category and regulations are as set out in the Notice of Race.
- 10.2 Crew of double handed yachts must wear life jackets at all times when on deck.
- 10.3 Yachts shall keep clear of all commercial shipping (vessels more than 35 metres in length) whilst within Port Phillip and Corio Bay and particularly while transiting shipping channels, as required by Port of Melbourne Corporation and Victorian Regional Channels Authority *Harbour Master Directions*. Ships are restricted in their ability to manoeuvre in channels and yachts should take any necessary avoiding action early.
- 10.4 In the event of avoiding action becoming necessary, a yacht may start its engine and motor to avoid a shipping hazard, on a course perpendicular to the ship's course for as long as necessary.
A yacht that takes such action shall return to the position at which the engine was started, cease motoring and resume racing as soon as possible. The details of any such action must be reported to the Race Director after finishing.
- 10.5 Yachts deemed to have impeded the progress of a commercial vessel may be disqualified after protest.
- 10.6 The ORCV strongly recommends that safety harnesses and suitable personal flotation devices be worn whenever conditions warrant, particularly in rough weather or when sailing short handed.
- 10.7 A boat or its equipment may be inspected at any time for compliance with the ORCV safety rules and sailing instructions.

- 10.8 The Race Director may, at his or her absolute discretion, disqualify a boat from participating or continuing to participate in the race if he believes that it is unsafe for that boat to commence or continue to race.

11.RADIO COMMUNICATION

- 11.1 A boat shall neither make radio transmissions while racing nor receive radio communications not available to all boats. This restriction also applies to mobile telephones.
- 11.2 Radio communications procedures are detailed in *Appendix A Radio Communication*.
- 11.3 Failure to sign on at the pre-race schedule shall result in the boat being scored DNS.

12.DISCLAIMER OF LIABILITY

- 12.1 All those taking part in this race do so at their own risk and responsibility.
- 12.2 Acceptance of a boat as an entrant in the race is not to be taken as express or implied acceptance on the part of the ORCV and/or any of its Flag Officers, Committee, Equipment Auditors or any other members, of the fitness of any boat or any equipment on such boat to safely compete in the race, and/or deal with any and all eventualities of the contemplated passage. It is the responsibility of each skipper of each competing boat to decide whether his/her boat is fit and suitably crewed for the intended purpose, and neither the ORCV nor any club, person or company connected with the organisation of the race is responsible for the seaworthiness of any boat whose entry is accepted.
- 12.3 Attention is drawn to Fundamental Rule 4 "Decision to Race" of the RRS which states:

The responsibility for a boat's decision to participate in a race or to continue racing is hers alone.

13.APPENDICES

The attached Appendices A, B, C and D form part of these Sailing Instructions.

APPENDIX A RADIO COMMUNICATION

A1. RACE FREQUENCIES

- A1.1 Radio communications for this race will be on VHF Channel 82 unless boats are directed to alternate frequencies.
- A1.2 The Race Director's mobile phone number, 0418 396 605, will be used to record finishing times as described in paragraph 6.2.

A2. RACE RADIO STATIONS

- A2.1 All race communications, including the Sign On Schedule, will be conducted by the ORCV using the call sign *Ocean Racing*.
- A2.2 Any other yacht or station nominated by the ORCV will provide assistance where necessary.

A3. SIGN ON SCHEDULE

- A3.1 A Sign On Schedule will be conducted on VHF Channel 82 by *Ocean Racing* commencing at 0835 on Sunday, 22 July 2018.
- A3.2 Boats will be called in alphabetical order to confirm that they are starters in the race and how many persons they have on board.
- A3.3 Boats that do not respond on the first call must wait until they are called again at the end of the schedule.
- A3.4 Any boat failing to respond during this schedule shall not be considered a starter in the event and shall be scored DNS.
- A3.5 Any alterations to the sailing instructions or to handicaps applicable for the race will be broadcast following completion of the Sign On Sched-

ule. All boats are required to maintain a listening watch at this time.

A4. PREMATURE STARTERS

Premature starters may be identified on VHF Channel 82.

A5. POSITION SCHEDULES

- A5.1 Boats are required to call *Ocean Racing* on VHF Channel 82 when crossing latitude S38° 12' for the first time.
- A5.2 Boats are required to call *Ocean Racing* on VHF Channel 82 when rounding SYC #1.

A6. YACHTS RETIRING

- A6.1 Should a boat retire from the race every effort must be made to advise the ORCV (*Ocean Racing*) as soon as possible and to give the following information:
- Time and position at the time of retirement
 - Reason for retirement
 - The state of the crew
 - The port to which the yacht is retiring
- A6.2 Boats that retire shall maintain a listening watch on VHF Channel 82 until such time as they reach a safe harbour.
- A6.3 Within two hours of arrival at a safe harbour, contact must be made with ORCV Melbourne (*Ocean Racing*) on VHF Channel 82 or telephone 0418 396 605 to confirm safe arrival.
- A6.4 Failure to comply with these requirements may prejudice acceptance of an entry in future races.

A7. SUMMARY

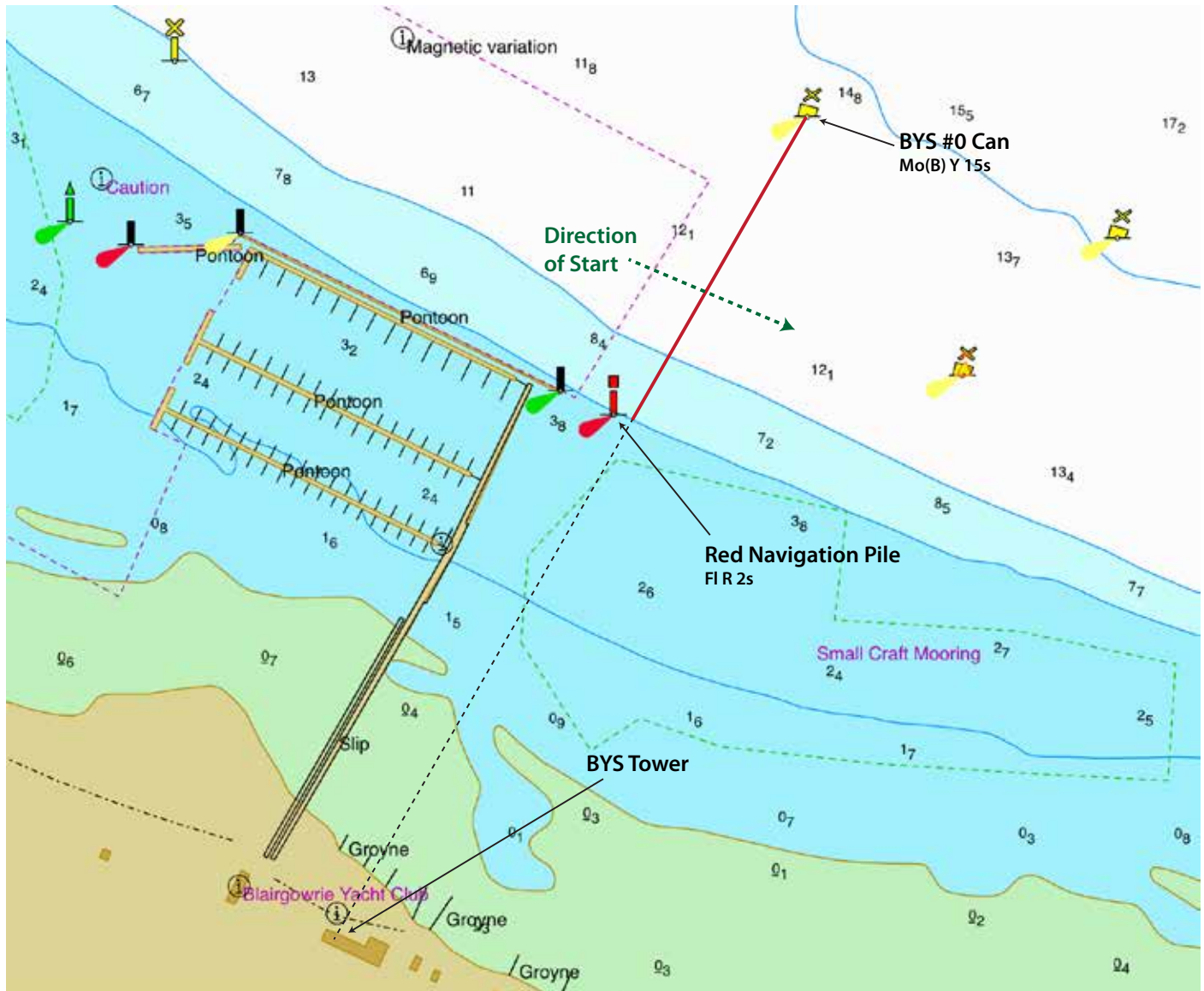
Date	Time	Action	Frequency	Station
22 July 2018	0835	Sign On Schedule	VHF Channel 82	Ocean Racing
		Alterations to Sailing instructions		
	0925-0930	Starting Sequence		
	0930-0945	Individual recalls may be notified		
	Rounding SYC #1	Position Schedule		
	1714	Sunset		

APPENDIX B STARTING LINE

Note: the positions shown in these diagrams are approximate and for planning purposes only. The diagrams should not be used for navigation and the positions shown may vary on the day.

The starting line will be between the Day-Glo Orange Post located on the Blairgowrie Yacht Squadron Tower and the cone buoy (BYS #0) located at approximately S38° 21.265' E144° 46.565'.

When starting, boats shall pass between the Red Navigation Pile adjacent to the east of the Blairgowrie Safe Harbour and BYS #0 (see the diagram below).



APPENDIX C COURSE

MARK DESCRIPTIONS

Mark	Location	Name	Description
SO10	S38° 21.336' E144° 47.313'	Sorrento Channel #10	Port Pile, Red
SO12	S38° 21.109' E144° 48.508'	Sorrento Channel #12	Port Pile, Red
SC19	S38° 20.126' E144° 54.479'	South Channel #19	Starboard Pile, Fl(2) G 5s 8M
SYC1	S37° 57.802' E144° 58.892'	SYC Club Mark #1	Pillar Buoy, Fl(4) Y 10s
ASW	S37° 57.437' E144° 59.305'	Anonyma West Cardinal	Pile, VQ(9) YBY 10s
SYC4	S37° 56.819' E144° 59.400'	SYC Club Mark #4	Pillar Buoy, Fl(4) Y 10s

Note: All mark positions are approximate and no guarantee of accuracy may be presumed.

COURSE DESCRIPTION

Mark	Side Left
Start	
SO10	Port
SO12	Port
SC19	Port
SYC1	Starboard
ASW	Starboard (passed)
Finish	30nm

APPENDIX D FINISHING LINE

Note: the positions shown in these diagrams are approximate and for planning purposes only. The diagrams should not be used for navigation and the positions shown may vary on the day.

The Finishing Line shall be an imaginary line between the sighting indicator in the SYC Race Control Tower at the starboard end and SYC No 4, a yellow spar buoy approximately 0.4nm bearing 243°M from SYC Race Control Tower, at the port end (see the diagram below).

A clearance mark may be laid adjacent to the break-water and yachts approaching the line shall leave this clearance mark to starboard.

