

Notice of Event

2014 Beyond the Bay Overnight Event

Incorporating the
Navigator's Challenge



BEYOND THE BAY

The Beyond the Bay Overnight Event has been developed to provide participants with an opportunity to put into practice many of the skills and techniques that have been introduced and discussed throughout the BTB lecture series over recent months.



Key areas covered in the BTB series include: night sailing, navigation, weather forecasting (winds and tides), safety procedures, provisioning, boat/crew management, watch systems and the use of additional safety gear.



Participants are encouraged to approach the event in the same spirit as planning a more serious off-shore passage. Make sure your crew is well organised, your boat is well prepared and, finally, that you have carefully considered the Sailing Instructions for the Event and planned your strategy with your crew for how best to optimise your performance for the event.



NOTICE OF EVENT

THE 2014 BEYOND THE BAY OVERNIGHT EVENT WILL BE CONDUCTED ON THE WATERS OF PORT PHILLIP AND CORIO BAY. THE EVENT IS BEING ORGANISED BY THE OCEAN RACING CLUB OF VICTORIA AND OWNERS OF ELIGIBLE YACHTS ARE INVITED TO ENTER THE EVENT UNDER THE CONDITIONS SET OUT BELOW.

1. THE EVENT

- 1.1 The event will be governed by the current versions of:
- The 2013-2016 Racing Rules of Sailing (RRS) of the ISAF, together with the prescriptions and safety regulations of Yachting Australia (YA);
 - The Special Regulations of the Ocean Racing Club of Victoria (ORCV);
 - The International Regulations for the Prevention of Collisions at Sea;

Except as amended by this Notice of Event .

- 1.2 Any amendments to this Notice of Event will be published on the ORCV website (www.orvc.org.au).
- 1.3 By entering this series, the owner of a yacht agrees that this Notice of Event (including amendments) and the entry form, the rules and regulations referred to above shall be complied with by the yacht and by the owner.

2. DIVISIONS

There will two divisions: spinnakers and non-spinnakers and each yacht will allocated an individual performance handicap.

3. ELIGIBILITY

- 3.1 The Event is open to all yachts of a thoroughly seaworthy nature owned and, ideally, crewed by participants of the 2014 Beyond The Bay Program
- 3.2 Boats will comply with Yachting Australia Special Regulations Category 5N.
- 3.3 The owner of a yacht entered in the race shall hold a marine legal liability insurance policy with respect to the yacht current when sailing, with a sum insured of not less than A\$10 million.
- 3.4 The minimum age of any person on board is 16 years, with a majority of the crew being of a minimum age of 18 years. Crew aged between 16 and 18 years must provide evidence to the Sailing Office demonstrating adequate past sailing experience.

- 3.5 At least one crew member on a yacht shall hold a Marine Radio Operators VHF Certificate of Proficiency issued by a relevant authority or higher qualification.
- 3.6 All persons on competing yachts shall be members of a Yachting Australia (YA) affiliated club.
- 3.7 Mentors who have been assigned to boats as part of the program may take part in the event but must not play an active role and can only act in an advisory capacity only.

4. APPLICATION FOR ENTRY

- 4.1 An application must be made on the ORCV's on-line entry system at www.orcv.org.au by selecting the Beyond The Bay button.
- 4.2 Entries close at 1700, 8 October 2014.
- 4.3 There is no fee for the event for Beyond The Bay participants.
- 4.4 Skippers who are not Beyond The Bay participants may compete but will be charged a \$35 entry fee. Trophies only apply to Beyond the Bay participants.

5. SCORING

While the primary aim of the event is to give Beyond The Bay participants the opportunity to put into practice what has been taught during the program lectures, there will be a novel scoring system to encourage all boats to take the event seriously and make every effort to achieve the best outcome for their boat.

6. TROPHIES

- 6.1 Depending on the number of entries in each division, there will be prizes awarded for first, second and third based on the handicap corrected points score.
- 6.2 Prizes will also be awarded to the boat recording the best log of the event and for photographic evidence of the best prepared meal during the event.

7. EVENT CLASSIFICATION & ADVERTISING

- 7.1 “BTB” and “Beyond the Bay” are trademarks of the Ocean Racing Club of Victoria and the use of the trademarks is absolutely restricted and limited to use by or with the consent of the ORCV.

8. MEDIA RIGHTS AND RESTRICTIONS

- 8.1 It is a condition of entry that the owner of the boat and all crew members:
- acknowledge that the ORCV owns all media rights to the Offshore Chamionship Series and may exercise those rights as it sees fit.

- grant the ORCV the unconditional, perpetual right and authority to publish and broadcast anywhere in the world, for any purpose and in any media, the names, images and biographical information relating to the crew and photographs, video footage and audio recordings taken of the boat and its crew prior to, during and after the race.



NAVIGATOR'S CHALLENGE

The objective of the event is to provide Beyond The Bay participants with an opportunity to put into practice many of the concepts that they have met during the BTB course of lectures including: night sailing, navigation, weather (wind and tide) forecasting, radio protocols, use of additional safety gear and provisioning. While it is competitive, the emphasis is on putting into practice the above skills and having fun in the process.

9. START

- 9.1 There are three starting locations:
- RBYC Tower and RBYC6 mark
 - RGYC Tower and RGYC mark
 - MYC Tower and MYC mark
- 9.2 The start will be at 1300 on Saturday, 11 October 2014.
- 9.3 There will be a sign on radio schedule at 0900 on VHF Channel 82 (Arthur's Seat repeater).
- 9.4 A phone sign-on for Geelong starters may be organised. Details will be notified on the ORCV website (www.orcv.org.au).

10. COURSE

- 10.1 There is a compulsory first leg(s) for each starting location. These are documented in "Compulsory Legs" on page 8 and the Bay map in "Leg Overview" on page 7.
- 10.2 Thereafter any choice of the approved legs may be sailed. See the Bay map in "Leg Overview" on page 7 and the table in "Optional Legs Summary" on page 9.
- 10.3 On reaching a mark, yachts cannot turn through more than 180° to start another mark.
- 10.4 There will be regular radio reporting schedules every three hours starting from 1200 (noon):
- | | |
|------|------|
| 1200 | 0000 |
| 1500 | 0300 |
| 1800 | 0600 |
| 2100 | 0900 |

Radio schedules will take place on VHF Channel 82 (Arthur's Seat repeater).

11. FINISH

- 11.1 The finish will be at HBYC.
- 11.2 There are compulsory finishing legs for all boats as described in "Compulsory Legs" on page 8.
- 11.3 The objective is to finish as close to 1000 on Sunday, 12 October 2014 as possible.
- 11.4 Yachts must finish between 0900 and 1100.
- 11.5 Yachts not finished by 1100 will be scored DNF.
- 11.6 Yachts must call Ocean Racing on VHF Channel 71 on rounding PM77.

12. SCORING

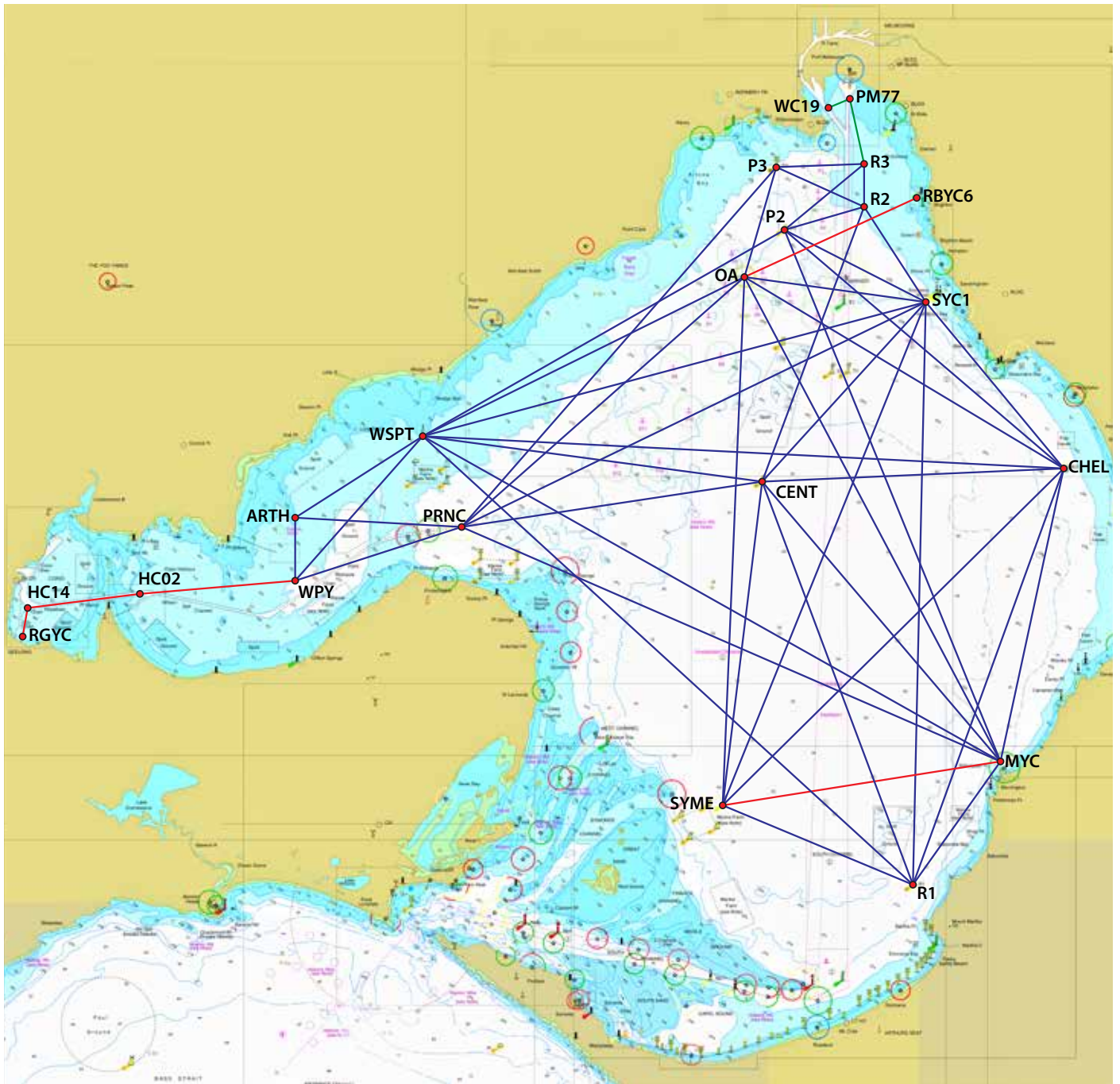
- 12.1 Points will be scored as follows:
- One point for each mile (nm) sailed
 - One point for each mark rounded North of S38° 03' and two points for each mark rounded South of it.
 - 5 points for each successful radio schedule
- 12.2 Yachts can motor for up to two hours but will incur a penalty of $(\text{minutes of motoring}/60) * 3$.
- 12.3 The penalty for not finishing at 1000 given by $(\text{minutes early or late}/60) * 10$.
- 12.4 Yachts will be ranked in order of points scored with the largest number of points taking first place.
- 12.5 There will also be prizes for the best logs, provisioning and so on.

MARKS

Mark	Approximate Location	Characteristics	Description
ARTH	S38° 04.874' E144° 33.298'	Fl Y 6s	Arthur, Yellow Can, Marks Prohibited Area
CENT	S38° 03.512' E144° 52.220'	Fl(2) Y 10s	Yellow Can, Centre of Bay
CHEL	S38° 03.081' E145° 04.539'	Unlit	Yellow Can, Chelsea Foul Ground, Carrum #2
HC02	S38° 07.165' E144° 26.799'	F R + Iso R 4s 5M	Red Pile, Hopetoun Channel 2, K2271
HC14	S38° 07.591' E144° 22.231'	Iso R 4s 5M	Red Pile, Hopetoun Channel 14, K2284
MYC	S38° 12.520' E145° 01.960'	Unlit	Start mark off Mornington YC Tower
OA	S37° 57.010' E144° 51.432'	Fl(4) Y 12s 3M	Yellow Pile, Outer Anchorage, K2418.9
P2	S37° 55.438' E144° 53.186'	Fl Y 4s	Yellow Cone, Pipeline 2
P3	S37° 53.389' E144° 52.851'	Fl Y 3s	Yellow Pile, Pipeline 3, K2417.32
PM77	S37° 51.141' E144° 55.792'	Fl(2) G 4s	Green Pile, Port Melbourne Channel 77
PRNC	S38° 04.955' E144° 39.945'	Q 1s 9M	North Cardinal Pile, Entrance Beacon, K2241, AIS
R1	S38° 16.467' E144° 58.366'	Fl(3) Y 10s	Yellow Pillar, Recreational 1
R2	S37° 54.552' E144° 56.331'	Fl(3) Y 10s	Yellow Pillar, Recreational 2
R3	S37° 53.167' E144° 56.379'	Fl Y 4s	Yellow Spar, Recreational 3
RBYC6	S37° 54.350' E144° 58.560'	Fl(4) Y 12s	Yellow Conical, RBYC Club Mark
RGYC	S38° 08.524' E144° 22.144'	Fl Y 5s	Yellow Conical, RGYC Club Mark
SYC1	S37° 57.811' E144° 58.879'	Fl(4) Y 10s	Yellow Spar Buoy, SYC Club Mark
SYME	S38° 13.908' E144° 50.613'	Q(3) 10s	East Cardinal Buoy, Symonds Channel
WC19	S37° 51.479' E144° 55.005'	Fl G 2s 2M	Green Pile, Williamstown Channel 19
WPY	S38° 06.578' E144° 33.241'	Fl Y 6s	Yellow Can, Marks Prohibited Area
WSPT	S38° 02.037' E144° 38.365'	Q(6) 10s	South Cardinal Pile, Wedge Spit



LEG OVERVIEW



COMPULSORY LEGS

COMPULSORY STARTING LINE LEGS

Leg	From	To	Round	Dist	Comments
RGYC Start					
1	RGYC	HC14	Starboard	0.9nm	Between RGYC tower & RGYC mark leaving it to starboard
2	HC14	HC02	Starboard	3.6nm	
3	HC02	WPY	Port	5.1nm	
RBYC Start					
4	RBYC6	OA	Comment	6.2nm	Between RBYC tower & RBYC6, leaving it to starboard Round OA to starboard if P3 next, else port
MYC Start					
5	MYC	SYM	Starboard	9nm	Between MYC tower & MYC, leaving it to starb

COMPULSORY FINISHING COURSE

Leg	From	To	Round	Dist	Comments
6	R3	PM77	Port	2.1	
7	PM77	WC19	Port	0.7	Finishing line to HBYC tower



OPTIONAL LEGS SUMMARY

Leg	Mark1	Mark 2	Distance (nm)
8	R1	SYME	6.6
9	R1	WSPT	21.4
10	R1	CHEL	14.3
11	R1	CENT	13.8
12	R1	SYC1	18.7
13	R2	R3	1.4
14	R2	P2	2.6
15	R2	P3	3
16	R2	CENT	9.6
17	R2	SYC1	3.9
18	R3	P3	2.9
19	R3	P2	3.4
20	OA	P3	3.7
21	OA	WSPT	11.6
22	OA	MYC	17.6
23	OA	PRNC	12
24	OA	SYME	16.9
25	OA	CENT	6.6
26	OA	CHEL	12.1
27	OA	SYC1	5.9
28	SYC1	P2	5.1
29	SYC1	PRNC	16.5
30	SYC1	WSPT	16.8
31	SYC1	CENT	7.7

Leg	Mark 1	Mark 2	Distance (nm)
32	SYC1	CHEL	7.7
33	SYC1	SYME	17.4
34	PRNC	P3	15.4
35	PRNC	WPY	5.5
36	PRNC	ARTH	5.2
37	PRNC	CENT	9.8
38	PRNC	MYC	18.9
39	CHEL	WSPT	20.7
40	CHEL	WSPT	20.7
41	CHEL	P2	11.8
42	CHEL	CENT	9.8
43	CHEL	SYME	15.5
44	CHEL	MYC	9.6
45	WPY	ARTH	1.7
46	WPY	WSPT	6.1
47	ARTH	WSPT	4.9
48	CENT	WSPT	11
49	CENT	MYC	11.8
50	CENT	SYME	10.4
51	MYC	SYME	9
52	MYC	WSPT	21.3
53	MYC	P2	18.4
54	WSPT	P2	13.5

