

NOTICE OF RACE

2022-23 WEST OFFSHORE PRODUCTS COASTAL SPRINT SERIES RACE 1



Photograph by Steb Fisher

Coastal Sprint Series

Version 1.00

ORCV COASTAL SPRINT SERIES RACE 1

The ORCV's Coastal Sprint races are each approximately 55NM in length starting at Queenscliff and finishing in the proximity of Port Phillip Heads.

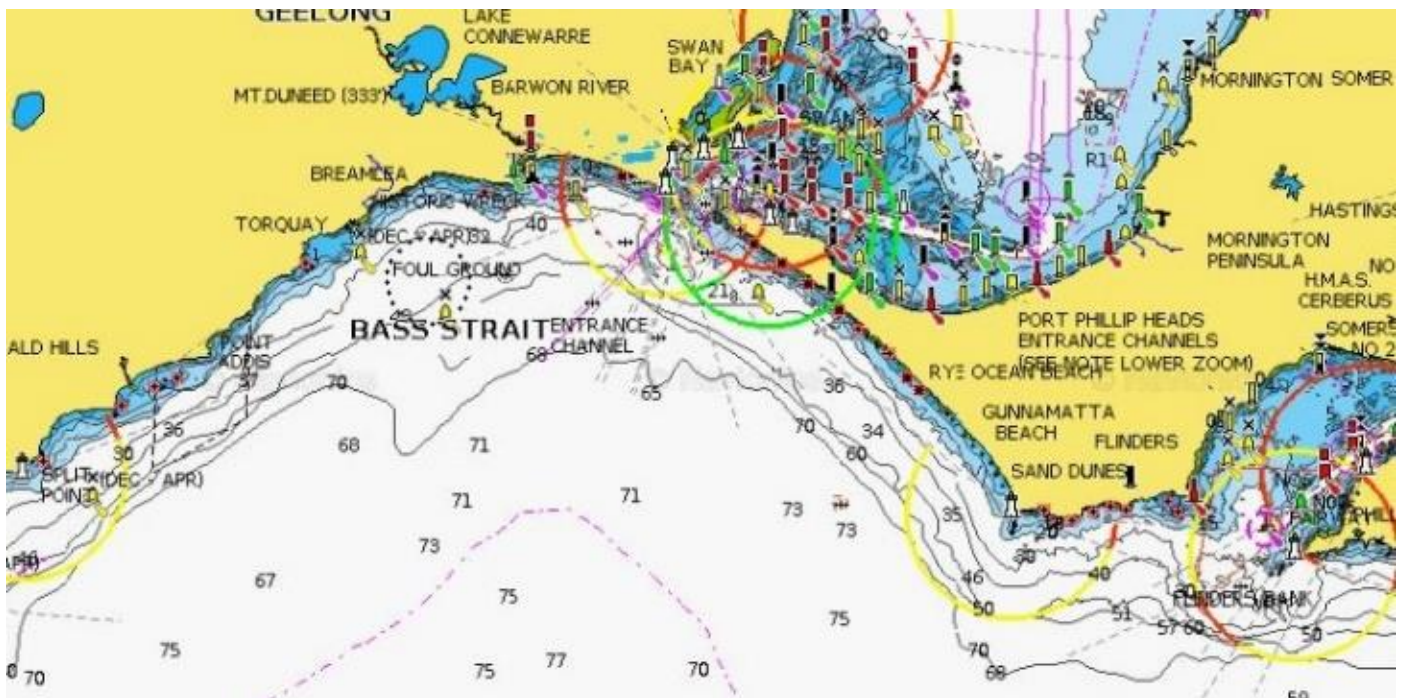
The courses are set in the waters broadly bounded by Drapers Reef, Phillip Island and Split Point. Virtual marks and gates may be used to take best advantage of expected race conditions. Subject to weather, at least one course in the series will head east to round the Western Port fairway entrance buoy before returning to finish off Portsea Back Beach.

The three Category 3 Coastal Sprint races are designed to enable Melbourne based crews to return to their Home Clubs on Saturday night if required. Crews with more time are encouraged to take the opportunity of an overnight stay at either the Queenscliff Cruising Yacht Club or at the Blairgowrie Yacht Squadron.

Including the Apollo Bay Race, the ORCV program now includes four Category 3 races as a viable "stand alone" Coastal Championship series for those who are unable to participate in longer events but also providing a great development path for those who wish to enter the world of Cat 1 & 2 offshore racing and for new double handed offshore crews.

The Coastal Sprints are eligible races in both the ORCV's Offshore Championship and the ORCV Coastal Championship which will be determined on results from our four Category 3 offshore events.

Coastal Sprint Course Area



Coastal Series

Copyright © Ocean Racing Club of Victoria, Inc 2022

NOTICE OF RACE

THE 2022 - 23 ORCV WEST OFFSHORE PRODUCTS COASTAL SPRINT SERIES WILL BE CONDUCTED IN BASS STRAIT FROM A START AT THE ENTRANCE OF PORT PHILLIP BAY. OWNERS OF ELIGIBLE YACHTS ARE INVITED TO ENTER RACE 1 OF THE SERIES UNDER THE CONDITIONS OF THIS NOTICE OF RACE. THE RACE IS ORGANISED AND CONDUCTED BY THE OCEAN RACING CLUB OF VICTORIA INC (ORCV).

1. RACE

- 1.1. Subject to government health regulations, the warning signal for the race will be displayed at 0640 Australian Eastern Standard Time (AEST) on Saturday, 17 September 2022.
- 1.2. This is a Category 3 race conducted from the start off Queenscliff in the area broadly defined by Drapers Reef, Phillip Island and Split Point and finishing in the vicinity of Port Phillip Heads.
- 1.3. The details of the course will be given in the Sailing Instructions for the race.

2. RULES

- 2.1. The race will be governed by the current versions of:
 - the 2021-2024 Racing Rules of Sailing (RRS) of World Sailing (WS),
 - the Prescriptions and Special Regulations of Australian Sailing (AS),
 - the Special Regulations of the ORCV.
 - where applicable, the rules and regulations of the Australian Measurement System (AMS) the ORC.
 - The International Regulations for Preventing Collisions at Sea;except as amended by this Notice of Race and the Sailing Instructions.
- 2.2. The ORCV reserves the right to amend this Notice of Race. Amendments will be published on the ORCV website (www.orcv.org.au) and existing entrants will be notified.
- 2.3. By entering this race, the owner of a yacht agrees that this Notice of Race (including amendments) and the entry form, the rules and regulations referred to in NoR 2.1 and the Sailing Instructions shall be complied with by the yacht and by the owner.
- 2.4. The Sailing Instructions will be issued through the ORCV website (www.orcv.org.au).

3. COVID SAFE REQUIREMENTS

- 3.1. The owner of the yacht shall take all reasonable steps to ensure that all of the yacht's crew comply with all Victorian Government Health Regulations and social distancing requirements which may apply at the time.

4. DIVISIONS & CATEGORIES

- 4.1. Subject to clause 4.5, the race will be conducted with the following racing Divisions and Handicap Categories:
 - Unrestricted Monohull (AMS, ORC, PHS.)
 - Double Handed (AMS, ORC, PHS)
 - Cruising Non-Spinnaker (PHS)
- 4.2. Entries in the Unrestricted Monohull division may race fully crewed, "Autohelm plus 4" or Double Handed.
- 4.3. Yachts racing Double Handed or "Autohelm plus 4" shall be scored as part of the overall fleet (Unrestricted Monohulls) but yachts racing Double Handed may also enter and be scored in a separate Double Handed Division
- 4.4. Entries to the Double Handed Division are separate and are additional to the entry of the yacht in the Unrestricted Monohull Division.

- 4.5. The Race Committee may create one or more additional divisions having regard to the number of entries and the performance characteristics of competitors.
- 4.6. Yachts entered in the AMS and ORC Handicap Categories shall have a valid Rating Certificate which includes a spinnaker with a measured area of at least 130% of the area of the yacht's fore triangle where the fore triangle area is defined as $0.5 \times FL \times J$ measured in accordance with the AMS rules.
- 4.7. Two-Handed measurement system handicaps (including ratings, TCF and/or allowances) are not used in the calculation of race results in the Unrestricted Monohull and Double Handed Divisions.
- 4.8. Yachts entering ORC must hold either an ORCi Rating Certificate or an Endorsed ORCc Rating Certificate based on data submitted to Yachting Australia by an accredited measurer

The Race Committee reserves the right to cancel any Division or Handicap Category with fewer than five entries. In the case of Handicap Categories, this right will be exercised if there are less than 3 entries in the relevant Category. This right to cancel includes the race as a whole, in which case entry fees will be refunded.

5. ELIGIBILITY

- 5.1. The race is open to yachts of a thoroughly seaworthy nature, which are entered by a member of a yacht club recognised by Australian Sailing.
- 5.2. Each yacht shall comply with the eligibility requirements listed in *Appendix B Yacht Eligibility Requirements*.
- 5.3. The ORCV may require remeasurement of any yacht prior to the yacht racing.
- 5.4. The crew of each yacht must meet the eligibility requirements listed in *Appendix C Crew Eligibility Requirements*.
- 5.5. A decision of the ORCV or the Race Committee as to any matter under this condition (NoR
- 5.6. Eligibility), including as to whether a yacht and her crew meet the eligibility criteria for entry is final and binding and will not be grounds for a request for redress.
- 5.7. All safety equipment shall be on board and available for inspection. On request by the Race Committee, yachts shall be made available for spot inspection to verify safety regulation compliance. Spot checks may be carried out prior to the warning signal or after a yacht finishes.

6. APPLICATION FOR ENTRY

- 6.1. An application for entry must be made on the online entry system at www.orcv.org.au.
- 6.2. To enter the race, a completed application for entry and payment of the race entry fee must be received by 2359 on Sunday, 11 September 2022.
- 6.3. At the sole discretion of the Race Committee, the ORCV may consider entries after that date but is unlikely to do so if the yacht had reasonable opportunity to submit an entry by the standard closing date.
- 6.4. The ORCV is not obliged to accept an application for entry and may reject or cancel the entry of a yacht that does not comply with the conditions of this Notice of Race.
- 6.5. Each yacht shall submit to the ORCV, no later than 2359 on Sunday, 11 September 2022 the information listed in *Appendix D Entry Documentation*.

Personal information about crew members is contained in crew lists. That information is obtained for use in search and rescue situations and for media purposes.

The information may be given to search and rescue authorities and organisations, the Water Police, volunteer coastal stations and media representatives and may be passed on by them to other organisations.

A condition of entry is that crew members are to be informed of this and advised that they may obtain access to the information held about them by contacting the ORCV.

- 6.6. Information supplied to or held by the ORCV under this Notice of Race (other than crew lists) shall not be changed (except to correct errors or after protest) after 2359 on Sunday, 11 September 2022.
- 6.7. A yacht's rating certificate shall not be changed after 2359 on Monday 12 September 2022 except as a result of a rating protest or to correct a rating office error.
- 6.8. A yacht's crew list may be changed to correct errors, to reflect late crew changes or after protest, but shall not be changed later than one hour prior to the starting signal. After any change to a crew list, the yacht shall still satisfy the requirements of NoR 5.4. Changes to the crew or details of any crew member shall be notified

through the online entry facility on the ORCV web site (www.orcv.org.au) or by mobile phone to the race director's phone (0418 396 465) on the day of the race.

7. LATE DOCUMENTATION

- 7.1. Unless a prior arrangement has been agreed with the Race Director and subject to clause 7.2, a time penalty of 10 minutes may be applied to the Finishing Time of any yacht which has not submitted complete yacht and crew documentation (as specified in Appendix D) by 2359 Sunday 11 September 2022. An equivalent penalty will be applied to any boat which has not completed any required radio check by 0900 Friday 16 September 2022.
- 7.2. Clause 7.1 does not apply to documentation changes arising from rating certificate amendments or, at the discretion of the Race Director, bona fide crew changes.

8. FEES

- 8.1. Race fees which include GST shall be paid by credit card via the Top Yacht entry system by 2359 on 11 September 2022.

8.2. Race Entry

The race entry fees are for the race and one Handicap Category. A fee is payable for each additional Handicap Category over the initial one.

A further additional fee applies where an eligible yacht enters the Double Handed Division

Normal Entry (on or before 2359 11/9/2022)	\$135
Additional handicap categories (each)	\$30
Double Handed Divisions	\$30

All ORCV members receive a 15% discount on the race entry fee.

A yacht will not be considered a valid entry until all entry fees are paid.

8.3. Crew Fees

A crew fee of \$55 is payable for each crew member who is not a member of the ORCV.

Please note that all crew are required to hold an Australian Sailing number or an international equivalent which may require the purchase of a temporary membership in the form of an ORCV Bay Pass. The cost of this pass, \$20, is additional to the Crew Fee.

8.4. Refund Policy

Entry fees are refundable in full up to the closure of entries on 11 September 2022. Entry fee refunds where a yacht withdraws her entry after 2359 11 September 2022 will be at the discretion of the Sailing Captain after submission of written applications.

Any cancellations must be notified by email (orcv@orcv.org.au) including account details (BSB, A/C Number) for refunding the entry fee balance.

9. SCORING

- 9.1. The scoring system will not be subject to protest or dispute (amends RRS 60.1 and 62.1(a)).
- 9.2. Prorated positions may be used to determine a result for the race in the event that the race is shortened.

10. TROPHIES

- 10.1. Trophies are presented to competitors for the following achievements, subject to the qualifications noted below:

- Line Honours – First yacht to cross the finish line.
- First, Second and Third placegetters on corrected time in each Handicap Category subject to the number of starters qualifications noted below.

10.2. All trophies are awarded subject to sufficient entries in the particular Division and Handicap Category as follows:

- Fewer than seven starters, no 3rd place trophy is awarded.
- Fewer than five starters, no 2nd or 3rd place trophies are awarded.
- Fewer than three starters, there is no race for that Handicap Category and no trophies are awarded.

Line honours follow the same rules except all monohull entries are counted regardless of handicap Categories.

10.3. The presentations will be at the 2023 ORCV Annual Presentation Night at a date, time and location to be announced. Mementos may be in the form of a single memento for each yacht listing all eligible trophies won during the season

11. CHANGES TO RULES

11.1. Changes to the Racing Rules of Sailing

RRS 41: While racing, a boat may retrieve data from any page of the ORCV website, and other websites even if that page is not generally available.

RRS 44.2 - Two Turns Penalty will apply for breaking a rule of RRS, Part 2 in Port Phillip.

RRS 44.3 - A Scoring Penalty will apply for breaking a rule of RRS, Part 2 outside Port Phillip Heads.

RRS 51: A yacht with movable ballast or variable ballast (within the meaning of those terms in the Special Regulations) may move that ballast for the purpose of changing trim or stability to the extent permitted by their stability rating.

RRS 52: The rule shall be modified:

- to allow self-steering equipment to be used by yachts sailing in the Double-Handed Division and in the Unrestricted Monohull Division with a maximum of four (4) persons on board;
- to allow the adjustment of movable water ballast or canting keels on any yacht and the use of stored power to do so, and
- to allow the use of stored power for sail handling and sail trimming on any yacht.

RRS 61.3: There is no time limit on protests by the Race Committee or the Protest Committee.

RRS 64.2 - Scoring Penalties may apply at the discretion of the Protest Committee.

RRS 78.2: Valid rating/class certificates shall be produced by the due date specified in this Notice of Race.

RRS 90.3: No time limit will apply for the correction of incorrect published results.

RRS 64.2: Scoring Penalties may apply at the discretion of the Protest Committee.

11.2. Changes to the Australian Special Regulations

The minimum required fuel for yachts equipped with diesel propulsion engines shall not be less than the recommended amount of fuel specified in the AS Special regulations in clause 3.24.5(c).

Yachts equipped with electric propulsion engines shall, by use of batteries and generating capacity, shall have sufficient power to proceed under motor with an effective range of 60 nautical miles.

12. TRACKING DEVICES

12.1. Yachts shall operate AIS transmitters at all times when racing including transmission of the boat's name and MMSI.

12.2. A yacht that interferes with the normal operation of a tracking device or fails to comply with an ORCV request in regard to tracking devices will be subject to protest by the Race Committee.

13. EVENT CLASSIFICATION & ADVERTISING

- 13.1. Advertising on a yacht shall comply with the requirements of WS Regulation 20 (WS Advertising Code) for Category C.
- 13.2. The ORCV shall be advised of all advertising that a yacht intends to carry. The ORCV shall be advised of all changes to that advertising.
- 13.3. The ORCV may decline to accept an application for entry of a yacht which, in its opinion, is carrying advertising which conflicts with governmental regulations. If in doubt, the ORCV should be consulted as soon as practicable.

14. TRADEMARKS & COPYRIGHT

- 14.1. "Coastal Sprint Series" is a trademark of the Ocean Racing Club of Victoria, Inc and the use of the trademark is absolutely restricted and limited to use by or with the consent of the ORCV.
- 14.2. This document is Copyright © Ocean Racing Club of Victoria, Inc 20221. All enquiries should be directed to:
Ocean Racing Club of Victoria
3 Aquatic Drive
ALBERT PARK VIC 3206 ,Australia

15. MEDIA RIGHTS & RESTRICTIONS

- 15.1. It is a condition of entry that the owner of the yacht and all crew members:
 - acknowledge that the ORCV owns all media rights relating to the West Offshore Products Coastal Sprint Series Race 1 and may exercise those rights as it sees fit;
 - grant the ORCV the unconditional, perpetual right and authority to publish and broadcast anywhere in the world, for any purpose and in any media, the names, images and biographical information relating to the crew and photographs, video footage and audio recordings taken of the yacht and its crew prior to, during and after the race.
- 15.2. Crew members of yachts may, prior to, during and after the race, speak or provide material to any media representatives accredited by the ORCV, regarding the race and the prospects, performance or strategy of yachts entered or participating in the race, subject to any comments and material not undermining or interfering with, or having a detrimental impact on, the ORCV, any sponsor and their officers and employees, the Race Committee, the Protest Committee, measurers or current or former sponsors of the ORCV. This approval may be revoked by the ORCV in respect of a yacht or media representative at any time.
- 15.3. Entrants acknowledge and accept the media restrictions referred to in this clause (NoR 15) by completing the entry form.
- 15.4. Any breach of these conditions may, at the discretion of the ORCV or the Race Committee, lead to the rejection of an entry, the cancellation of an entry or the disqualification of a yacht (refer RRS 76.1). This does not limit the right of the ORCV to take any other action it sees fit to enforce compliance with these conditions.

16. DISCLAIMER

All those taking part in the race do so at their own risk and responsibility. Crew acknowledge this and release the ORCV and their respective officers, employees, volunteers and members, from all liability by entering their names on the crew list.

Specific attention is drawn to RRS Fundamental Rule 3, which states:

"The responsibility for a boat's decision to participate in a race or to continue racing is hers alone"

Appendix A STABILITY REQUIREMENTS

THE REQUIREMENTS SPECIFIED IN THIS APPENDIX APPLY TO ALL YACHTS INTENDING TO ENTER.

A1 RESISTANCE TO CAPSIZE

A yacht shall provide evidence as follows to demonstrate that it achieves not less than:

- an ORCi Stability Index of 103 or greater for the configuration in which the yacht proposes to race; or
- an IRC SSS Base Value of 16 or greater for the configuration in which the yacht proposes to race, or
- an ISO 12217-2 Design Category A or B; or
- a Screening Value (SV) of 10 or less subject to AS Special Regulations Part 1 Appendix B paragraph B.5.1, or
- a Righting Moment Index (RMI) of 1.4 or greater.

A2 EXPIRED CERTIFICATION

As evidence of resistance to capsize, a yacht without a current valid ORCi or IRC Certificate but with a previously valid certificate may supply its most recent previously valid certificate with a Stability Index or SSS Base Value with a satisfactory margin above the stability requirement for Race Category 3

events for the configuration in which the yacht proposes to race, accompanied by a

completed Stability Declaration in a format supplied by or acceptable to the ORCV.

A3 MOVABLE OR VARIABLE BALLAST

A yacht with movable or variable ballast shall provide evidence that it achieves not less than a Knockdown Recovery Factor of 0.8 under International Standard ISO 12217-2, calculated in accordance with ISO 12217-2 paragraph 6.4.4 with the lesser of FKR_{90} and FKR_{90} used. Special Regulations Appendix B 7.2.2 shall apply.

A4 FALSIFIED DOCUMENTATION

Competitors found to be falsifying documentation, deliberately invalidating certificates or otherwise misleading the race committee with regard to stability of their yacht are subject to action under RRS 69.1. If found guilty the penalty could include disqualification. The incident would also be reported to Australian Sailing.

A determination by the Race Director as to the adequacy of supplied documentation or a yacht's compliance with the stability requirements for this race is final and binding.

Appendix B YACHT ELIGIBILITY REQUIREMENTS

YACHTS MUST COMPLY WITH THE REQUIREMENTS LAID OUT IN THIS APPENDIX TO BE CONSIDERED ELIGIBLE FOR ENTRY TO THE RACE.

Check	Category	Requirement
	General	Yachts shall be built in accordance with the Special Regulations Part 1, Section 3.03 and Appendix C as applicable.
		The Safety Regulations shall be those of AS Special Regulations, Part 1, Category 3.
		All yachts must comply with Victorian regulations regarding recreational craft safety requirements including the requirements regarding Life raft/Dinghy (LOA 12M+) and lifejackets.
	Insurance	The owner of a yacht entered in the race shall hold a marine legal liability insurance policy with respect to the yacht current when racing, with a sum insured of not less than A\$10 million. The insurance policy shall state that the yacht is covered for the race or that it is covered for yacht races of a length greater than the race length.
	AMS Yachts	<p>A yacht may only be entered in AMS if the yacht:</p> <ul style="list-style-type: none"> • has a current, valid AMS Certificate issued by YRSA Inc; and • complies with all of the current AMS Rules and Regulations, save to the extent they are specifically amended or excluded in this Notice of Race or the Sailing Instructions. • The requirements of clause 4.6 are satisfied. <p>Non Spinnaker and 2 Handed Rating certificates are not used.</p>
	ORC Yachts	<p>A yacht may only be entered in ORC if the yacht:</p> <ul style="list-style-type: none"> • has a current ORCi Certificate issued by ORC; or a current Endorsed ORCc Certificate issued by ORC; • complies with all the current ORC Rules and Regulations, save to the extent they are specifically amended or excluded in this Notice of Race or the Sailing Instructions (refer RRS 78.1); and • The requirements of clause 4.6 are satisfied. <p>Non Spinnaker and 2 Handed Rating certificates are not used.</p>
	Radio	Each competing yacht shall carry a VHF transceiver with channels 12, 16, 67, 71, 73 and 82. Yachts which have not competed in an ORCV offshore event in the 2021-22 season yachts must perform a radio check with the ORCV using the Arthur's Seat repeater (VHF Channel 82) between Saturday 3 September 2022 and 0900 Friday 16 September 2022. SMS or call the race director's phone (0418 396 465) to arrange a time.
	Charts	<p>The following paper charts must be carried by those competitors who do not have access to Official Electronic charts.</p> <p>AUS 144 Australia South Coast - Victoria - The Rip AUS 788 Australia South Coast - Victoria - Cape Otway to Cape Schanck</p>

Appendix C CREW ELIGIBILITY REQUIREMENTS

A YACHT'S CREW MUST COMPLY WITH THE REQUIREMENTS LAID OUT IN THIS APPENDIX TO BE CONSIDERED ELIGIBLE FOR ENTRY TO THE RACE AND ALL RELEVANT CREW INFORMATION SHALL BE LOADED IN THE TOPYACHT CREW DATABASE.

Check	Category	Requirements
	Membership	All persons sailing on competing yachts shall be members of an AS-affiliated club or an international equivalent or have temporary membership through the purchase of an ORCV Bay Pass. AS membership numbers or their international equivalents must be included on the crew list. A temporary AS number is issued upon purchase of an ORCV Bay Pass and should be entered in TopYacht along with other crew details.
	Age	The minimum age of any person on board is 16 years, with a majority of the crew being of a minimum age of 18 years. Crew aged 16 and 17 years must provide evidence to the Sailing Office demonstrating past sailing experience and hold a current AS Safety & Sea Survival certificate. The Race Committee may, at its absolute discretion, refuse to allow any crew members aged between 16 and 18 years of age to participate in the race.
	Experience	In accordance with AS Special Regulation 2.04, at least two of the crew including the skipper and/or sailing master shall have sufficient experience, declared on the entry form and accepted as such by ORCV.
	Training	It is recommended that at least two of the crew on a yacht shall have completed an Australian Sailing Safety and Sea Survival Course (SSSC) or an ORCV approved equivalent. The expiry date of SSSC or equivalent certificates shall be included in crew member's Top Yacht profile.
		It is recommended that the skipper or sailing master have a recognised Australian Sailing certificate (or equivalent) of at least an Offshore Skipper certification.
	First Aid	It is recommended that at least one crew member on a yacht shall hold an <i>HLDT003 Provide First Aid Certificate</i> or equivalent qualification or be a practising medical practitioner.
	Radio	At least one crew member shall hold a <i>Short-Range Operator Certificate of Proficiency (SROCP)</i> , an <i>Australian Waters Qualification</i> or higher qualification issued by a relevant authority.
	Double Handed	For the Double-Handed Division, both crew members must be over 18 years of age. Double Handed crew are required to wear Life Jackets at all times when on deck.

Appendix D ENTRY DOCUMENTATION

THE DOCUMENTATION LISTED BELOW MUST BE UPLOADED IN THE BOAT DOCUMENTS SECTION OF TOP YACHT BY 2355 ON 11 SEPTEMBER 2022 TO COMPLETE THE YACHT'S ENTRY TO THE RACE. THE SUBMISSION OF LATE DOCUMENTATION GENERATES SIGNIFICANT ADDITIONAL WORK FOR BOTH OFFICE STAFF AND RACE OFFICIALS. IN SUPPORT OF EFFICIENT AND SAFE RACE MANAGEMENT, A FINISHING TIME PENALTY OF 10 MINUTES MAY BE APPLIED TO ENTRANTS WHO HAVE NOT SUBMITTED REQUIRED DOCUMENTATION AND COMPLETED AND REQUIRED RADIO CHECKS BY THE DUE DATE. SEE CLAUSE 7 OF THE NoR

Check	Documentation	Notes
	Crew List (Online), correctly and fully completed with all associated personal details. Yachts are responsible for its accuracy and currency.	
	A completed Category 3 Australian Sailing Safety Equipment Audit Form	
	406 EPIRB Certificate(s) or evidence of registration and currency	
	Current Insurance Policy Certificate of Currency	
	Evidence of Stability (see Appendix A Stability Requirements). When relying on a Screening Value, please submit the calculation along with evidence to support the length and weight used.	
	Colour photograph of the yacht under sail suitable for search and rescue purposes. This may be a copyright free digital photograph of a size not less than 6cm by 6cm with a resolution not less than 75 DPI.	
	Stability Declaration (in the form supplied by the ORCV) that no changes have been made to the yacht since the issue of the above Evidence of Stability	
	Skipper's Race Entry Compliance Declaration (in the form supplied by ORCV)	