

SAILING INSTRUCTIONS

2022 WOMEN SKIPPERS & NAVIGATORS YACHT RACE



WOMEN SNR
ORCV BAY RACING

Version 1.0

AMENDMENTS

Number	Instructions Changed	Summary of Amendment

Copyright © Ocean Racing Club of Victoria, Inc 2022

All enquiries to:

Ocean Racing Club of Victoria, Inc
3 Aquatic Drive
ALBERT PARK VIC 3206
Australia

SAILING INSTRUCTIONS

THE 2022 WOMEN SKIPPERS & NAVIGATORS YACHT RACE WILL BE CONDUCTED ON THE WATERS OF PORT PHILLIP. THE RACE IS ORGANISED AND CONDUCTED BY THE OCEAN RACING CLUB OF VICTORIA, INC WITH THE CO-OPERATION OF THE BLAIRGOWRIE YACHT SQUADRON.

1. RULES

1.1. The rules for the race shall be:

- the 2020-2024 Racing Rules of Sailing (RRS) of World Sailing (WS),
- the Prescriptions and Special Regulations of Australian Sailing (AS),
- the Notice of Race,

except as amended by these Sailing Instructions.

1.2. All times in these Sailing Instructions are Australian Eastern Standard Time (AEST) unless otherwise stated.

2. NOTICES TO COMPETITORS

2.1. Notices to competitors will be posted on the ORCV website (www.orcv.org.au).

2.2. Any change to these Sailing Instructions may be posted on the ORCV website (www.orcv.org.au).

2.3. Any such changes will be announced after the Sign-On Schedule as detailed in SI A4.

2.4. ***A pre race briefing will be held on the Balcony at BYS at 0830***

3. CLASS FLAGS

Classes/Divisions	Class Flag
Combined Classes	Whisky (W)

4. THE START

The start will be as described in Appendix B Start.

5. THE COURSE

The course will be as described in Appendix C Course.

6. THE FINISH

The finish will be as described in *Appendix D Finish*.

7. TIME LIMITS

The Time Limit for all yachts shall be 1600. Any yacht finishing after this time shall be scored DNF (amends RRS 35).

8. DECLARATION

Written declarations are not required. A yacht correctly passing though the finish line is deemed to have made a declaration on the part of her skipper that to the best of her knowledge no rules have been breached during the race. If the skipper is in any doubt, they should email the Race Director at race.director@orc.vic.gov.au or SMS the Race Directors phone 0418 396 605

9. PROTESTS & REQUESTS FOR REDRESS

9.1. Any protest or request for redress is to be lodged with the ORCV office no later than 1200 on Monday, 11 July 2022. The office contact details are: orc.vic.gov.au

- 9.2. A yacht intending to protest or request redress must inform the Race Director giving any details as may be known at the time by email (race.director@orcv.org.au) or SMS (0418 396 605).
- 9.3. Any protests or requests for redress will be heard at a time and place to be advised.
- 9.4. When the protest committee decides that a yacht that is a party to a protest hearing has broken a rule, it shall disqualify her or apply some lesser penalty (amends Rule 64.2(a)).
- 9.5. Any request for redress involving the official time sheet must be submitted as soon as possible after the posting of the results but no later than 1200 on Monday, 11 July 2022.
- 9.6. The protest committee shall not be entitled to abandon the race as a consideration for redress (amends RRS 64.3).

10. SAFETY REGULATIONS

- 10.1. The Safety Category and regulations are as set out in the Notice of Race.
- 10.2. The ORCV strongly recommends that safety harnesses and suitable lifejackets be worn whenever conditions warrant, particularly in rough weather, at night or when sailing short-handed.
- 10.3. The crew of yachts sailed Double Handed must wear lifejackets at all times when on deck.
- 10.4. In particular, attention is drawn to Victorian regulations which stipulate the mandatory wearing of lifejackets when on deck during times of heightened risk. This includes crossing a bar, transiting the Heads, sailing at night and when the weather or weather forecast indicates risk. For full details, consult the Transport Safety Victoria website (www.transportsafety.vic.gov.au).
- 10.5. Yachts shall keep clear of all commercial shipping (vessels more than 35 metres in length) while within Port Phillip.
- 10.6. In the event of avoiding action becoming necessary, a yacht may start her engine and motor to avoid a shipping hazard, on a course perpendicular to the ship's track for as long as necessary.
- 10.7. A yacht that takes such action shall return to the location she started motoring, cease motoring and resume racing as soon as possible. The details of any such action must be reported to the Race Director via email to race.director@orcv.org.au or SMS to the Race Director's phone 0418 396 605
- 10.8. A yacht or her equipment may be inspected before or after the race for compliance with the Notice of Race and these Sailing Instructions.
- 10.9. The Race Director may, at their absolute discretion, disqualify a yacht from participating or continuing to participate in the race if they believe that it is unsafe for that yacht to commence or continue to race.

11. UNSUITABLE CONDITIONS

- 11.1. After commencement of the race, the race can be terminated at the Race Director's discretion.
- 11.2. The Race Director may deem the race to be abandoned, rescheduled to another time or shortened.
- 11.3. Prorated positions may be used to determine a result for the race and/or for any series.
- 11.4. Termination of the race will be advised by radio.

12. RACE COMMUNICATIONS

Race communications procedures, are detailed in Appendix A Race Communications.

13. DISCLAIMER OF LIABILITY

- 13.1. All those taking part in this race do so at their own risk and responsibility.
- 13.2. Acceptance of a yacht as an entrant in the race is not to be taken as express or implied acceptance on the part of the ORCV and/or any of its Flag Officers, committee members, Equipment Auditors or any other members, of the fitness of any yacht or any equipment on such yacht to safely compete in the race, and/or deal with any and all eventualities of the contemplated passage. It is the responsibility of each skipper of each competing yacht to decide whether his/her yacht is fit and suitably crewed for the intended purpose, and neither the ORCV nor any club, person or company connected with the organisation of the race is responsible for the seaworthiness of any yacht whose entry is accepted.

13.3. Attention is drawn to Fundamental Rule 3 “Decision to Race” of the RRS which states:

The responsibility for a boat’s decision to participate in a race or to continue racing is hers alone.

14. APPENDICES

The attached Appendices A, B, C and D form part of these Sailing Instructions.

Appendix A RACE COMMUNICATIONS

THIS APPENDIX DESCRIBES THE RADIO AND OTHER COMMUNICATIONS PROCEDURES TO BE FOLLOWED DURING THIS RACE.

A1 GENERAL

- A1.1 While racing, a yacht shall neither make nor receive radio communications not available to all yachts. This restriction also applies to mobile telephones and satellite phones.
- A1.2 Yachts with AIS transponders must have them switched on and transmitting the boats details at all times.
- A1.3 It is compulsory for yachts to respond to all scheduled radio and SMS communications, including the Sign-On Schedule and complete the Position Reports.
- A1.4 Yachts must not give false or misleading position reports.
- A1.5 Yachts are required to monitor VHF Channel 16 at all times when not actually using the radio with other channels.

A2 RACE CHANNELS

- A2.1 Radio communications for this race will be on VHF Channel 82 unless yachts are directed to alternative channels.
- A2.2 The Race Director's mobile phone number (0418 396 605) will be used to record finishing times as described in *Appendix D Finish*.
- A2.3 The following VHF channels may be used:

Channel	Usage
82	Race Communications
16	Distress & Calling
67	Working, MSI

- A2.4 The following telephone numbers may be used:

Number	Usage
0418 396 605	Race Director's Phone Crew changes Finishing

- A2.5 The following email addresses may be used:

Email Address	Usage
race.director@orcv.org.au	Race director messages

- A2.6 When mobile coverage is available, the Race Director may be contacted on the Race Director's phone (0418 396 605).

A3 RACE RADIO STATIONS

- A3.1 ORCV (*Ocean Racing*)
- Sign-On Schedule (VHF 82)
 - Premature starters (VHF 82)
 - Position Reports (VHF 82)
- A3.2 Changes to communication arrangements may be announced following the Sign-On Schedule.

A4 SIGN ON SCHEDULE

- A4.1 A Sign-On Schedule will be conducted on VHF Channel 82 by *Ocean Racing* commencing at 0930 and concluding no later than 0950 on Sunday, 10 July 2022.
- A4.2 Yachts will be called in alphabetical order to confirm that they are starters in the race. If intending to race, a yacht must reply “{yacht name} is a starter, we comply with the Notice of Race, {xx} persons on board, OVER”.
- A4.3 A yacht that does not respond on the first call must wait until she is re-called at the end of the schedule.
- A4.4 Any yacht failing to respond on the Race Frequency during this schedule shall not be considered a starter in the event and shall be scored DNS.
- A4.5 Any changes to the Sailing Instructions and changes to yacht handicaps will also be announced during the schedule.
- A4.6 In case of difficulties, yachts should contact the Race Director via an SMS text message to 0418 396 605.

A5 PREMATURE STARTERS

Premature starters may be identified on VHF Channel 82.

A6 POSITION REPORTS

- A6.1 Ocean Racing will conduct position reports at 1205 and 1505 on VHF 82; Yachts will be called in alphabetical order, to give their position in Degrees and whole Minutes at the hour immediately before the report, Any yacht that does not respond must wait until she is re-called at the end of the schedule.

A7 YACHTS RETIRING

- A7.1 Should a yacht retire from the race, every effort must be made to advise *Ocean Racing* as soon as possible and give the following information:
- Time & position at the time of retirement
 - Reason for retirement
 - The state of the crew
 - The port to which the yacht is retiring.
- A7.2 Any yacht that retires shall maintain a listening watch on VHF Channel 82 until such time as she reaches a safe harbour.
- A7.3 Within two hours of arrival at a safe harbour, contact must be made with ORCV (*Ocean Racing*) by radio on VHF Channel 82 or the Race Director’s phone (0418 396 605) to confirm safe arrival.
- A7.4 Failure to comply with this requirement may prejudice acceptance of an entry in future races.

A8 SUMMARY

Date	Time	Action	Channel	Station
10 July 2022	0930	Sign-On Schedule	VHF Channel 82	Ocean Racing
		Alterations (SIs, Handicaps)		
	0955-1000	Starting Sequence		
	1000+	Individual Recalls (may be notified)		
	1205	Position Report		
	1505	Position Report		
	1600	Race Limit		

Appendix B START

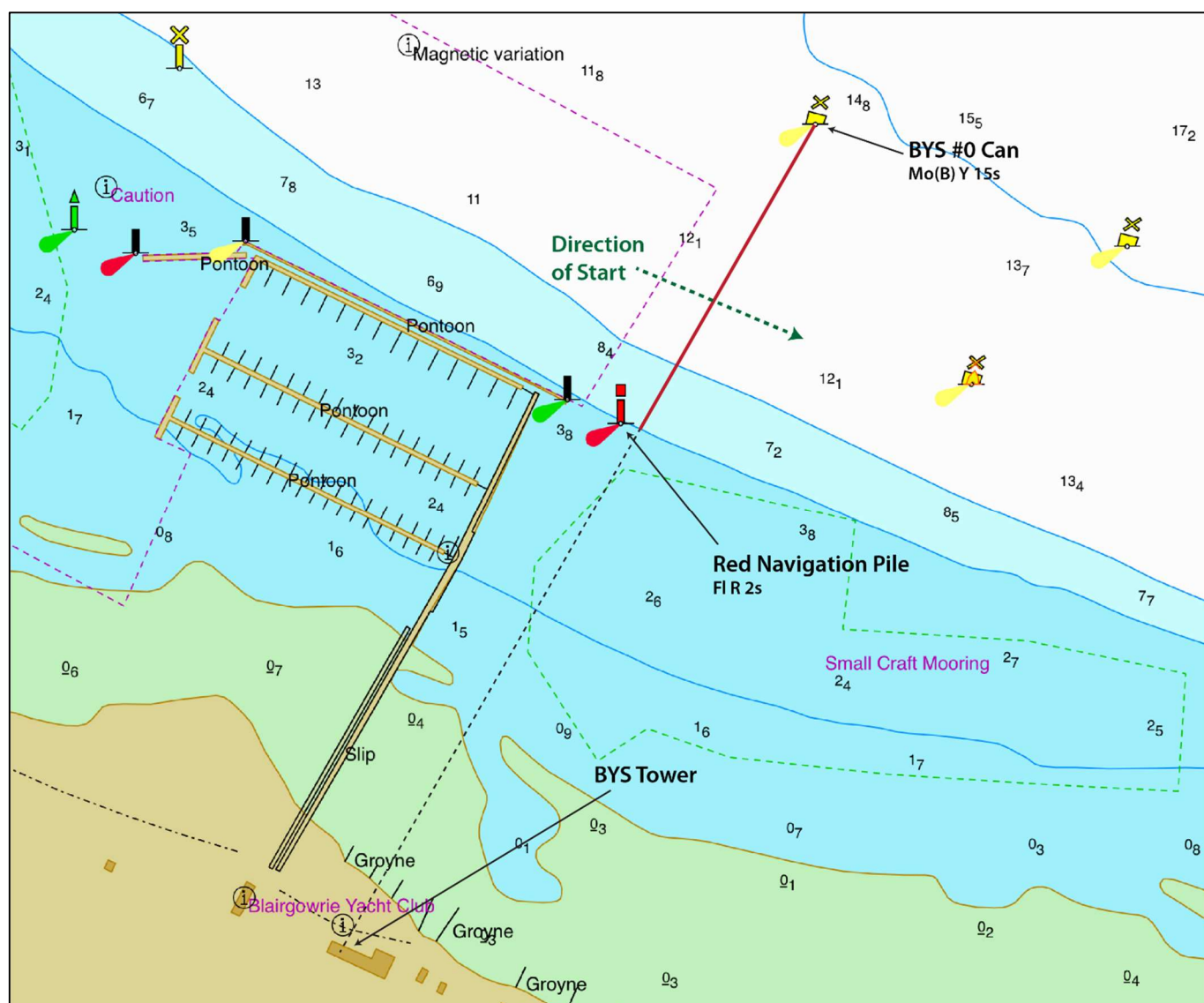
THIS APPENDIX CONTAINS INFORMATION ABOUT THE STARTING LINE AND THE STARTING PROCEDURES. NOTE: THE POSITIONS SHOWN IN THESE DIAGRAMS ARE APPROXIMATE AND FOR PLANNING PURPOSES ONLY. THE DIAGRAMS SHOULD NOT BE USED FOR NAVIGATION AND THE POSITIONS SHOWN MAY VARY ON THE DAY.

B1 START PROCEDURE

- B1.1 The start time will be 1000 on Sunday, 10 July 2022 in the vicinity of the BYS marina allowing the Race Director, at their discretion, to postpone to another time.
- B1.2 Races will be started in accordance with RRS 26.

B2 STARTING LINE

- B2.1 The starting line will be between the Day-Glo Orange Post located on the Blairgowrie Yacht Squadron Tower and the cone buoy (BYS #0) at approximately S38° 21.265' E144° 46.565'.
- B2.2 When starting, yachts shall pass between the Red Navigation Pile adjacent to the east of the Blairgowrie Safe Harbour and BYS #0 (see the diagram below).
- B2.3 **An alternative starting line may be used. If so, this will be announced by the Race Director at the Race Briefing to be held at 0830 on the balcony at BYS**



Appendix C COURSE

THIS APPENDIX DESCRIBES THE COURSE AND HOW IT IS TO BE SAILED. NOTE: THE POSITIONS SHOWN IN THESE DIAGRAMS ARE APPROXIMATE AND FOR PLANNING PURPOSES ONLY. THE DIAGRAMS SHOULD NOT BE USED FOR NAVIGATION AND THE POSITIONS SHOWN MAY VARY ON THE DAY.

C1 MARK DESCRIPTIONS

Mark	Location	Name	Description
BYS0	S38° 21.265' E144° 46.565'	BYS #0	Cone Buoy
SO10	S38° 21.336' E144° 47.313'	Sorrento Channel #10	Port Pile, Red
SO12	S38° 21.109' E144° 48.508'	Sorrento Channel #12	Port Pile, Red
SC19	S38° 20.126' E144° 54.479'	South Channel #19	Starboard Pile, Fl(2) G 5s 8M
SC25	S38° 17.929' E144° 55.948'	South Channel #25	Pile, Starboard Fl(4) G 12s
SYC1	S37° 57.802' E144° 58.892'	SYC Club Mark #1	Pillar Buoy, Fl(4) Y 10s
ASW	S37° 57.437' E144° 59.305'	Anonyma West Cardinal	Pile, VQ(9) YBY 10s
SYC4	S37° 56.819' E144° 59.400'	SYC Club Mark #4	Pillar Buoy, Fl(4) Y 10s

Note: All mark positions are approximate, and no guarantee of accuracy may be presumed.

C2 COURSE DESCRIPTIONS

Mark	Side Left
Start	
SO10	Port
SO12	Port
SC19	Port
SC25	Port
SYC1	Starboard
ASW	Starboard (passed)
Finish	~30nm

Appendix D FINISH

THIS APPENDIX DESCRIBES THE FINISHING LINE AND ANY POST-FINISHING PROCEDURES. NOTE: THE POSITIONS SHOWN IN THESE DIAGRAMS ARE APPROXIMATE AND FOR PLANNING PURPOSES ONLY. THE DIAGRAMS SHOULD NOT BE USED FOR NAVIGATION AND THE POSITIONS SHOWN MAY VARY ON THE DAY.

D1 FINISHING LINE

The Finishing Line shall be an imaginary line between the sighting indicator in the SYC Race Control Tower at the starboard end and SYC No 4, a yellow spar buoy approximately 0.4nm bearing 243°M from SYC Race Control Tower, at the port end (see the diagram below).

A clearance mark may be laid adjacent to the breakwater and yachts approaching the line shall leave this clearance mark to starboard.

D2 NAVIGATORS PRIZE

Navigators who wish to submit a log shall submit it preferably in PDF format to the Race Director race.director@orcv.org.au within one hour of the yacht finishing.

