

SAILING INSTRUCTIONS

2020-21 WEST OFFSHORE PRODUCTS COASTAL SPRINT SERIES RACE 3



Coastal Sprint Series

WEST
OFFSHORE PRODUCTS

Version 1.1

AMENDMENTS

| Number | Instructions Changed | Summary of Amendment |
|--------|----------------------|---|
| 1 | Table C4.1 | The Western Course listed in Table C4.1 is corrected by replacing the duplicate reference to Gate C with the word Finish. |
| | | |
| | | |
| | | |
| | | |
| | | |
| | | |
| | | |
| | | |
| | | |

Copyright © Ocean Racing Club of Victoria, Inc 2021

All enquiries to:

Ocean Racing Club of Victoria, Inc
3 Aquatic Drive
ALBERT PARK VIC 3206
Australia

SAILING INSTRUCTIONS

RACE 3 OF THE 2020-21 WEST OFFSHORE PRODUCTS COASTAL SPRINT SERIES WILL BE CONDUCTED ON THE WATERS OF PORT PHILLIP AND BASS STRAIT. THE RACE IS ORGANISED AND CONDUCTED BY THE OCEAN RACING CLUB OF VICTORIA.

1. RULES

- 1.1. The rules for the race shall be:
- the 2021-2024 Racing Rules of Sailing (RRS) of World Sailing (WS),
 - the Prescriptions and Special Regulations of Australian Sailing (AS),
 - the Special Regulations of the Ocean Racing Club of Victoria (ORCV),
 - where applicable, the rules and regulations of the Australian Measurement System (AMS) and the IRC Rule Parts A, B and C;
 - the Notice of Race,
- except as amended by these Sailing Instructions.
- 1.2. All times in these Sailing Instructions are Australian Eastern Standard Time (AEST) unless otherwise stated.
- 1.3. Between the hours of Sunset and Sunrise, RRS 10 to 22 inclusive shall cease to be applicable and shall be replaced by the International Regulations for the Prevention of Collision at Sea.
- 1.4. For the purpose of this race, the times of Sunrise and Sunset shall be as follows:
- Sunrise: 0654
 - Sunset: 1741

2. NOTICES TO COMPETITORS

- 2.1. Notices to competitors will be posted on the ORCV website www.orcv.org.au.
- 2.2. Any change to the Sailing Instructions may be posted on the ORCV website (www.orcv.org.au). Any such alterations will be announced after the Sign On Schedule or during the Shipping Advice Broadcast as detailed in *Appendix A Race Communications*.

3. THE START

The start is as described in *Appendix B Start*.

4. THE COURSE

- 4.1. The course is as described in *Appendix C Course*.
- 4.2. Please note this course includes virtual marks and, as part of a validation process competitors are required to record their rounding/passing times for a number of marks and advise ORCV as part of their Race Declaration. Yachts which do not lodge completed Declaration Forms may be disqualified and scored dnf.

5. THE FINISH

The finish is as described in *Appendix D Finish*.

6. PROTESTS & REQUESTS FOR REDRESS

- 6.1. Protests or requests for redress are to be lodged with an official of the ORCV or emailed to the ORCV office no later than 1200 on Monday, 26 April 2021.
- 6.2. Yachts intending to protest or request redress must inform the Race Director giving any details as may be known at the time using their declarations, on a protest form or by SMS.
- 6.3. Protests or requests for redress will be heard at a time and place to be advised.
- 6.4. The protest committee shall not be entitled to abandon the race as a consideration for redress (amends RRS 64.2).

7. PENALTY SYSTEM

- 7.1. If, after a protest and hearing, a yacht is found to have infringed a rule, the protest committee may disqualify or otherwise penalise the yacht in accordance with the provisions of RRS 64.
- 7.2. The protest committee may apply a time penalty for a breach of a rule or the Sailing Instructions declared by an infringing competitor without a hearing or after a hearing if a protest is contested.
- 7.3. The following penalties will be applied for breaches of these Sailing Instructions or the Racing Rules of Sailing (RRS), including any

modification noted in the Notice of Race, at the discretion of the Protest Committee:

- For a minor infringement – 15 minutes
- For a significant infringement – 60 minutes
- For a serious infringement – the penalty will rest with the protest committee and may result in a time penalty or disqualification.

- 7.4. All penalties will be noted on the time sheet and shall be applied to finishing times. Yacht positions will be adjusted after penalties are applied (amends RRS 44.3).

8. YACHTS RETIRING

Yachts retiring shall inform the Race Director as described in *A11 Yachts Retiring*.

9. SAFETY REGULATIONS

- 9.1. The Safety Category and regulations are as set out in the Notice of Race.
- 9.2. The ORCV strongly recommends that safety harnesses and suitable lifejackets be worn whenever conditions warrant, particularly in rough weather, at night or when sailing short-handed.
- 9.3. The crew of yachts sailed Double Handed must wear lifejackets at all times when on deck.
- 9.4. In particular, attention is drawn to Victorian regulations which stipulate the mandatory wearing of lifejackets when on deck during times of heightened risk. This includes crossing a bar, transiting the Heads (classified as a bar), sailing at night and when the weather or weather forecast indicates risk. For full details, consult the Transport Safety Victoria website (www.transportsafety.vic.gov.au).
- 9.5. Yachts shall keep clear of all commercial shipping (vessels more than 35 metres in length) while within Port Phillip and particularly while transiting Port Phillip Heads, as required by Port of Melbourne Corporation Harbour Master's Directions. Ships are restricted in their ability to manoeuvre while entering Port Phillip and yachts should take any necessary avoiding action early.
- 9.6. In the event of avoiding action becoming necessary, a yacht may start its engine and motor to avoid a shipping hazard, on a course perpendicular to the ship's track for as long as necessary.

- 9.7. A yacht that takes such action shall return to the location they started motoring, cease motoring and resume racing as soon as possible. The details of any such action must be reported to the Race Director on the Declaration after finishing.

- 9.8. Attention is drawn to Rule 9 (a) and Rule 9 (b) of the International Regulations for Preventing Collisions at Sea, 1972, and yachts shall hold to any course and directions prescribed during the Shipping Advice Broadcast. Yachts found to have impeded the progress of a commercial vessel will be disqualified.

- 9.9. A yacht or its equipment may be inspected at any time for compliance with the ORCV safety rules and sailing instructions.

- 9.10. The Race Director may, at her or his absolute discretion, disqualify a yacht from participating or continuing to participate in the race if they believe that it is unsafe for that yacht to commence or continue to race.

10. UNSUITABLE CONDITIONS

- 10.1. After commencement of the race, the race can be terminated at the Race Director's discretion.
- 10.2. The Race Committee may deem the race to be abandoned, rescheduled to another time or shortened. Arrangements for shortening course are detailed in Appendix C.
- 10.3. Prorated positions may be used to determine a result for the race and/or for any series.
- 10.4. Termination of the race will be advised by radio on VHF Channel 82.

11. RACE COMMUNICATIONS

Race communications procedures are detailed in *Appendix A Race Communications*.

12. DISCLAIMER OF LIABILITY

- 12.1. All those taking part in this race do so at their own risk and responsibility.
- 12.2. Acceptance of a yacht as an entrant in the race is not to be taken as express or implied acceptance on the part of the ORCV and/or any of its Flag Officers, committee members, Equipment Auditors or any other members, of the fitness of any yacht or any equipment on such yacht to safely compete in the race, and/or deal with any and all eventualities of the contemplated passage. It is the responsibility of each skipper of each competing yacht to decide whether his/her yacht is fit and suitably crewed for the intended purpose, and neither the ORCV nor

any club, person or company connected with the organisation of the race is responsible for the seaworthiness of any yacht whose entry is accepted.

- 12.3. Attention is drawn to Fundamental Rule 3 "Decision to Race" of the RRS which states:

The responsibility for a boat's decision to participate in a race or to continue racing is hers alone.

13. CREW BEHAVIOUR

- 13.1. All participants are reminded that they are expected to comply with the Australian Sailing

member protection policies described in www.sailingresources.org.au/clubresources/memberprotection/.

- 13.2. Skippers are reminded that crew behaviour is their responsibility at all times, including post-race celebrations.

14. APPENDICES

The attached Appendices A, B, C, D and E form part of these Sailing Instructions.

Appendix A RACE COMMUNICATIONS

THIS APPENDIX DESCRIBES THE RADIO AND OTHER COMMUNICATIONS PROCEDURES TO BE FOLLOWED DURING THIS RACE.

A1 GENERAL

- A1.1 While racing, a yacht shall neither make nor receive radio communications not available to all yachts. This restriction also applies to mobile phones and satellite phones.
- A1.2 Yachts with AIS transponders must have them switched on in transmit mode with boat name and MMSI displayed at all times during the race and their return to Melbourne.
- A1.3 It is compulsory for yachts to respond to all scheduled radio and SMS communications, including the Sign-On Schedule and the Position Schedules.
- A1.4 Yachts must not give false or misleading position reports.
- A1.5 Yachts must not interfere with operation of any tracking units.
- A1.6 Yachts are required to monitor VHF Channel 16 at all times when not actually using the radio with other channels.

A2 RACE FREQUENCY

- A2.1 The following VHF channels may be used:

| Channel | Usage |
|---------|--|
| 82 | Race Communications other than Shipping Advice Broadcast Premature Starters |
| 12 | Shipping Advice Broadcast Premature Starters |
| 16 | Distress & Calling |
| 67 | Working, MSI |

- A2.2 The following telephone number may be used:

| Number | Usage |
|--------------|-----------------------|
| 0418 396 465 | Race Director's Phone |

- A2.3 The following email address may be used:

| Email Address | Usage |
|---------------------------|------------------------|
| race.director@orcv.org.au | Race director messages |

A3 CREW CHANGES

- A3.1 Late crew changes must be notified by calling the Race Director's mobile telephone between 1800 and 1900 on Friday, 23 April 2021.
- A3.2 When nominating additional crew, the following details are required to be entered in the online entry system: name of crew member, address, age, Australian Sailing membership number, and next of kin details including relationship to crew member, contact address and telephone number.

A4 PRE RACE MONITORING, SIGN ON SCHEDULE & COURSE SELECTION

- A4.1 Yachts are required to monitor VHF Channel 82 from 0800 until 0830 for pre race communications including any changes to Sailing Instructions including radio frequencies.
- A4.2 The Sign On schedule will be conducted on Channel 82 commencing at 0830 and concluding no later than 0900 on Saturday, 24 April 2021. *The selected course for the race will be announced at the commencement of the sign on schedule and again at the end of the first call of the yachts.*
- A4.3 Yachts will be called in alphabetical order to confirm that they are starters in the race. If intending to race, yachts must reply "{yacht name} is a starter, we comply with the Notice of Race, {xx} persons on board, OVER".
- A4.4 Yachts that do not respond on the first call must wait until they are re-called at the end of the schedule.
- A4.5 Any yacht failing to respond on the Race Frequency during this schedule shall not be

considered a starter in the event and shall be scored DNS.

- A4.6 In case of difficulties, yachts shall contact the Race Director via an SMS text message to 0418 396 465.

A5 SHIPPING ADVICE BROADCAST

- A5.1 At 0900, *Ocean Racing* will broadcast advice of shipping movements through Port Phillip Heads on VHF Channel 12.
- A5.2 All yachts are required to monitor this broadcast and maintain a listening watch on VHF Channel 12 until they are three nautical miles outside Port Phillip Heads. Lonsdale VTS and any shipping transiting the Heads will be monitoring this frequency as well.
- A5.3 Yachts shall revert to the VHF Channel 82 and VHF Channel 16 when three miles clear of the Heads.

A6 PREMATURE STARTERS

Premature starters may be identified on VHF Channel 12.

A7 POSITION REPORTING SCHEDULE

- A7.1 Position Reports have been scheduled commencing 1305, 1505 and 1805hrs on Saturday 24 April. One or more of these schedules may be deleted by the Race Director if not required for course shortening purposes.
- A7.2 Yachts, called in alphabetical order on VHF Channel 82 by *Ocean Racing*, shall report their position at the start of the relevant position reporting schedule in degrees and whole minutes only.

A8 SHORTENED COURSE ANNOUNCEMENT(S)

Decisions by the Race Director to shorten course shall be announced during the Position Reporting Schedules as appropriate.

A9 FINISHING REPORT

- A9.1 Unless shorten course applies, yachts must call *Ocean Racing* on Channel 82 as they pass through the finishing gate which is located approximately 2 miles before the finish.
- A9.2 A further call shall be made on Channel 82 as yachts cross the finish line in accordance with the finishing procedures set out in Appendix D and must then stand by on Channel 82 ready to receive any information which may be provided by ORCV regarding conditions at the entrance to Port Phillip Bay

A10 RADIO FAILURE

In the event of VHF radio failure yachts should contact the race director by mobile phone.

A11 YACHTS RETIRING

- A11.1 Should a yacht retire from the race, every effort must be made to advise *Ocean Racing* as soon as possible and to give the following information:
- Time & position at the time of retirement
 - Reason for retirement
 - The state of the crew
 - The port to which the yacht is retiring.
- A11.2 Yachts that retire shall continue to monitor the race frequency and respond to any radio messages from *Ocean Racing* until such time as they reach a safe harbour.
- A11.3 Within two hours of arrival at a safe harbour, contact must be made with ORCV (*Ocean Racing*) by radio or the Race Director's phone to confirm safe arrival.
- A11.4 Failure to comply with this requirement may prejudice acceptance of an entry in future races.

A12 SUMMARY

| Date | Time | Action | Channel | Station | Ref |
|----------|------------------------|--|----------------|---------------|----------|
| 23 April | 1800-1900 | Crew Changes | 0418 396 465 | Race Director | SI A3 |
| 24 April | 0800 -0830 | Pre Race Monitoring | VHF Channel 82 | Race Director | SI A4 |
| 24 April | 0830-0900 | Announcement of Course Selection Sign-On Schedule and monitor. | VHF Channel 82 | Race Director | SI A4 |
| 24 April | 0915 | Shipping Advice | VHF Channel 12 | Ocean Racing | SI A5 |
| 24 April | 0925- | Starting Sequence | VHF Channel 12 | Ocean Racing | SI B4.1 |
| 24 April | 0930 | Individual recalls may be notified | VHF Channel 12 | Ocean Racing | SI B4.2 |
| 24 April | 1305 | Position Report, Shorten Course | VHF Channel 82 | Ocean Racing | SI A7,A8 |
| 24 April | 1505 | Position Report, Shorten Course | VHF Channel 82 | Ocean Racing | SI A7,A8 |
| 24 April | 1805 | Position Report, Shorten Course | VHF Channel 82 | Ocean Racing | SI A7,A8 |
| 24 April | On passing finish gate | Report | VHF Channel 82 | Ocean Racing | SI A9 |
| 24 April | Finishing | Report and continue to monitor radio | VHF Channel 82 | Ocean Racing | SI A9 |

Appendix B START

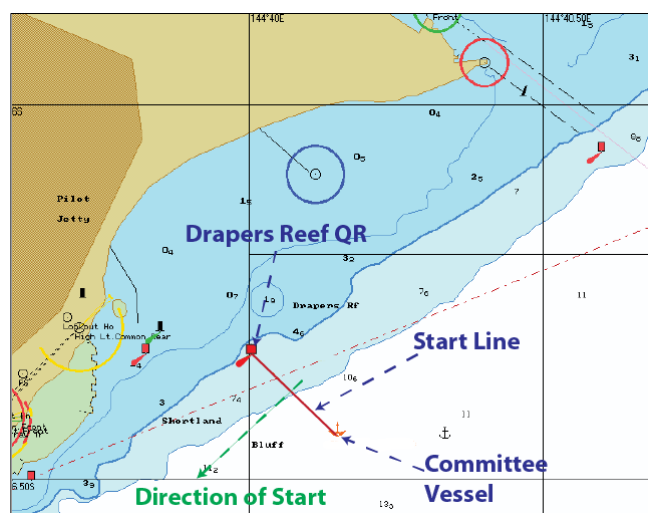
THIS APPENDIX CONTAINS INFORMATION ABOUT THE STARTING LINE AND THE STARTING PROCEDURES. NOTE: THE POSITIONS SHOWN IN THESE DIAGRAMS ARE APPROXIMATE AND FOR ILLUSTRATIVE PURPOSES ONLY. THE DIAGRAMS SHOULD NOT BE USED FOR NAVIGATION AND THE POSITIONS SHOWN MAY VARY ON THE DAY.

B1 START TIME

- B1.1 The start time will be 0930 on Saturday, 24 April 2021 in the vicinity of Drapers Reef, Queenscliff, always allowing the Race Committee, at their discretion, to postpone to another time.
- B1.2 Yachts may elect to start up to 30 minutes after the start signal.

B2 STARTING LINE

- B2.1 The Starting Line shall be an imaginary line between a Quick Flashing Red (QR) Light on the Drapers Reef Pile and a vessel or a buoy with a rotating blue light approximately 300 metres to the south east.



- B2.2 In the event of rough weather or other unforeseen difficulties, the vessel or buoy may not be in position. In this case the starting line will be an extension of an imaginary line from a rotating amber light on shore and the Draper's Reef Light, this line running almost east to west to a distance not exceeding 400 metres.
- B2.3 Yachts shall start in a South-Westerly direction.

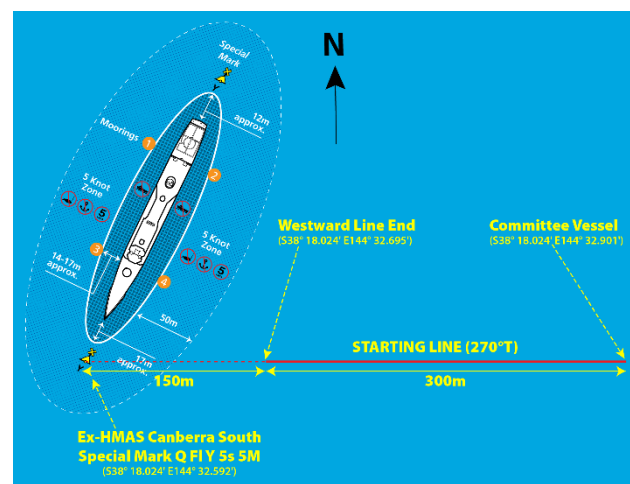
B3 ALTERNATIVE STARTING LINE

- B3.1 If the Race Director determines it necessary, an Alternative Starting Line may be announced by the Race Director.
- If the Alternative Starting Line is to be used, this will be announced at the Sign-On

Schedule along with a revised start time to enable competitors to reach the start location.

The Alternative Starting Line shall be an imaginary line beginning 150m to the East of the Quick Flashing Special Mark (Q FI Y 5s 5M) at the seaward end of the Ex-HMAS Canberra Dive Site and a vessel with a rotating blue light approximately 450 metres to the East.

- B3.2 The Quick Flashing Special Mark is located at approximately S38° 18.024' E144° 32.592'. The inner (westward) end of the starting line is at approximately S38° 18.024' E144° 32.695'. The outer (eastward) end of the starting line is at approximately S38° 18.024' E144° 32.901'.



- B3.3 After clearing the Heads on the way to the start, yachts will set their radios to VHF Channel 82 in case further instructions need to be given to the fleet. All such notices will be given on VHF Channel 82 until the start has completed.
- B3.4 If the start vessel is unable to be present, the start sequence will be conducted by radio on VHF Channel 82.

B4 START PROCEDURE

- B4.1 Races will be started using the following signals with flares replacing flags as visual signals.

- 0925 Warning Signal (white flare)
- 0930 Starting Signal (green flare)

There will be no Preparatory or One Minute signals (amends RRS 26).

- B4.2 Individual recalls may be signalled by one white flare. Premature starters may be identified on VHF Channel 12 (amends RRS 29.1).
- B4.3 There will be no General Recall (amends RRS 29.2).

B5 POSTPONEMENTS

- B5.1 A postponement may apply at the sole discretion of the Race Director.
- B5.2 Postponements will be announced on VHF Channel 82 before the Sign-On Schedule. If the timing is appropriate, an SMS may also be sent to each yacht on their primary registered contact phone. (amends RRS 27.3).

Appendix C COURSES

THIS APPENDIX DESCRIBES THE COURSES AND HOW THEY ARE TO BE SAILED. NOTE: THE POSITIONS GIVEN ARE APPROXIMATE AND THE DIAGRAMS SHOULD NOT BE USED FOR NAVIGATION PURPOSES. NOTE ALSO THAT THE POSITION OF SOME BUOYS USED AS MARKS OF THE COURSE ARE SUBJECT TO CHANGE.

C1 OVERVIEW

- C1.1 Five courses are offered for this race, each with one or more “shorten course” options. The courses range between 46 and 53NM miles in length, reducing to between 17 and 25NM under the various shorten course options. In summary the courses include:-
- The Westernport and Split Point courses used in previous Coastal Sprints but with minor amendments and additional Shorten Course options; and
 - Three new “triangular” courses using the central, eastern and western sections of the course area.
- C1.2 Course diagrams are given at the end of this Appendix.

C2 ANNOUNCEMENT OF COURSE TO BE SAILED

The Race Director will announce the course to be sailed at the beginning of the Sign On schedule and again at the conclusion of the first call of the yachts. This announcement may include a decision to use the Alternative Start but will not limit the Race Directors right to shorten course during the race.

C3 SHORTEN COURSE OPTIONS

- C3.1 The Race Director may shorten course by:-
- deleting one or more marks of the course;
 - relocating the finish line in accordance with clause D3.4;
 - finishing the race at any Mark of the Course ;or
 - any combination of the above
- C3.2 Decision(s) to shorten course will be announced at the Sign On or at a preceding position reporting schedule in accordance with Clause A8.

C4 COURSE DETAIL

- C4.1 For races starting in Port Phillip Bay the Courses are given in Table C4.1 on the following page.

Table C4.1

West Offshore Products Coastal Sprint Series Courses (Distances are Approximate)

| Westernport | | Central Course | | Eastern Course | | Short Eastern Course | | Western Course | | Split Point | |
|-------------|------|----------------|------|----------------|------|----------------------|-----|----------------|------|-------------|------|
| Start | | Start | | Start | | Start | | Start | | Start | |
| ORCVA | PT | ORCVA | PT | ORCVA | PT | Mark ASE | PT | ORCVA | PT | ORCVA | PT |
| ORCVB | PT | ORCVB | PT | ORCVB | PT | Gate P | | ORCVB | PT | ORCVB | PT |
| ORCVC | PT | ORCVC | PT | ORCVC | PT | Mark 4 | STB | ORCVC | PT | ORCVC | PT |
| Mark 1 | STB. | Mark 1 | STB. | Mark 1 | STB. | Gate C | | Mark 6 | STB | Mark 5 | PT |
| Mark 2 | STB. | Mark 4 | STB | Mark 2 | STB. | Finish | | Mark 7 | STB | SPI | PT |
| Mark 3 | PT | Mark 5 | STB | Mark 6 | STB. | | | Mark 5 | STB | SPO | PT |
| WPF | STB. | Gate C | | Gate C | | | | Gate C | | Gate C | |
| Gate P | | Finish | | Finish | | | | Finish | | Finish | |
| Finish | | | | | | | | | | | |
| Max Dist. | 53NM | | 51NM | | 52NM | 27NM | | | 52NM | | 49NM |

C4.2 In the event that the Alternative Start is used

- the requirement to leave the Heads Exclusion Zone marks (ORCVA ,B & C) to port is deleted; and
- additional mark ASE is added prior to Mark I in the Westernport, Central and Eastern courses.

C4.3 The location of Marks is given in Table C4.3. See Appendices B and D for the location of start and finish lines.

Table C4.3 - Location of Marks

| | Latitude | Longitude | Notes |
|-------------------------------------|--------------|---------------|-------------------------------------|
| ORCVA | S38° 16.900' | E144° 38.900' | Exclusion Zone boundary |
| ORCVB | S38° 17.950' | E144° 37.760' | Exclusion Zone boundary |
| ORCVC | S38° 18.500' | E144° 36.800' | Exclusion Zone boundary |
| ASE | S38° 20.038' | E144° 32.995' | Alternative Start Extra Mark |
| Mark 1 | S38° 26.559' | E144° 48.121' | |
| Mark 2 | S38° 28.583' | E144° 51.198' | |
| Mark 3 | S38° 30.382' | E144° 56.227' | |
| Mark 4 | S38° 25.630' | E144° 34.002' | |
| Mark 5 | S38° 24.522' | E144° 19.359' | |
| Mark 6 | S38° 33.500' | E144° 35.185' | |
| Mark7 | S38° 36.500' | E144° 34.943' | |
| SPI | S38° 28.144' | E144° 09.500' | Split Point Inner Rounding Mark |
| SPO | S38° 28.144' | E144° 10.000' | Split Point Outer Rounding Mark |
| WPF | S38° 30.213' | E145° 05.376' | Westernport Fairway Buoy |
| Gate P - between NM & SM | | | Gate for Portsea Back Beach Finish |
| NM | S38° 22.800' | E144° 43.950' | northern mark of Gate |
| SM | S38° 23.600' | E144° 42.640' | southern mark of gate |
| Gate C – between WM & EM | | | Gate for Canberra Wreck Site Finish |
| WM | S38° 18.566' | E144° 30.396' | western mark of gate |
| EM | S38° 19.259' | E144° 31.181' | eastern mark of gate |

C5 HEADS EXCLUSION ZONE

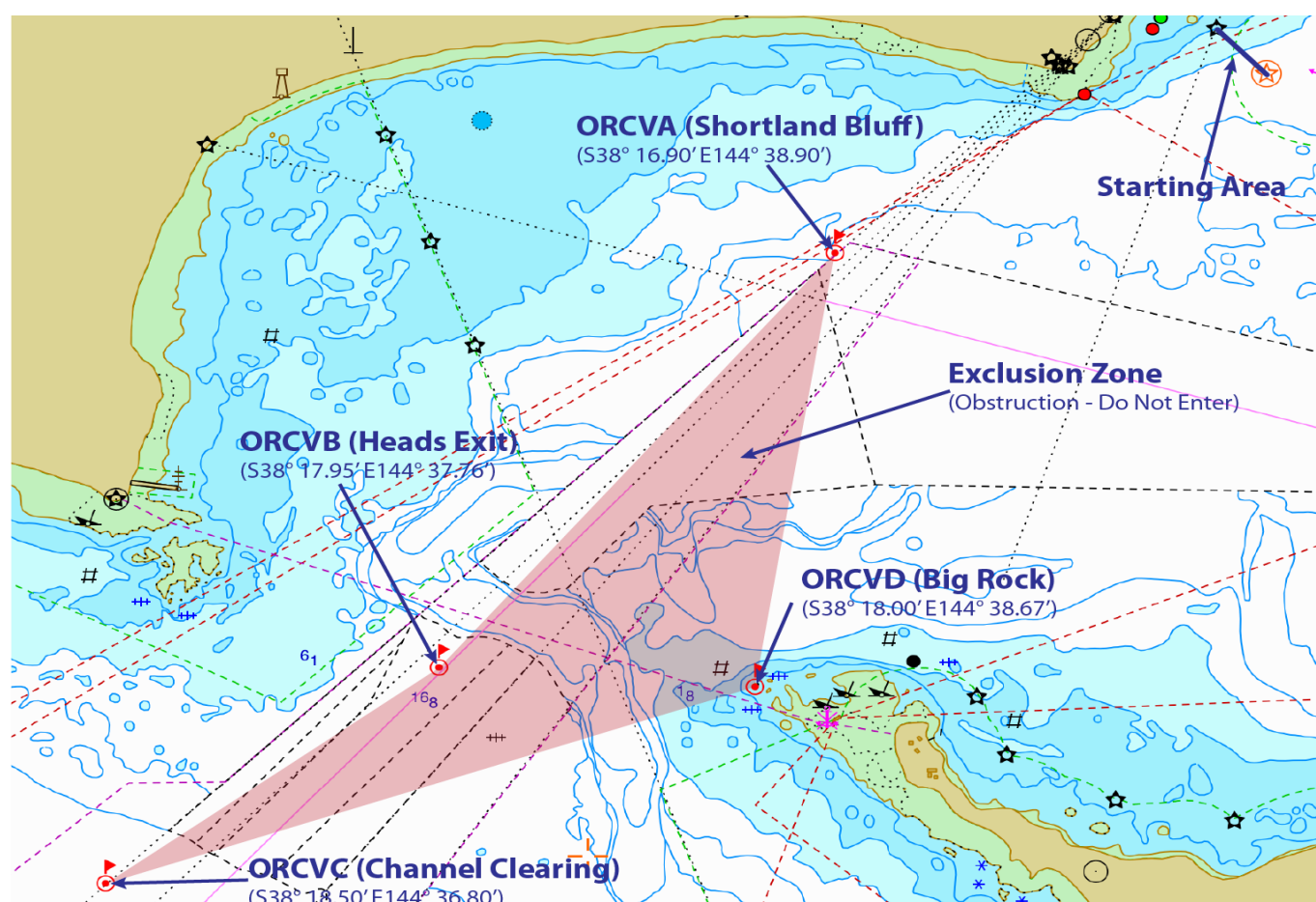
C5.1 Yachts are required to keep out of the main channels in Port Phillip Heads and to avoid obstructing shipping.

The area bounded by the following locations, shown in the diagram below, is an obstruction:

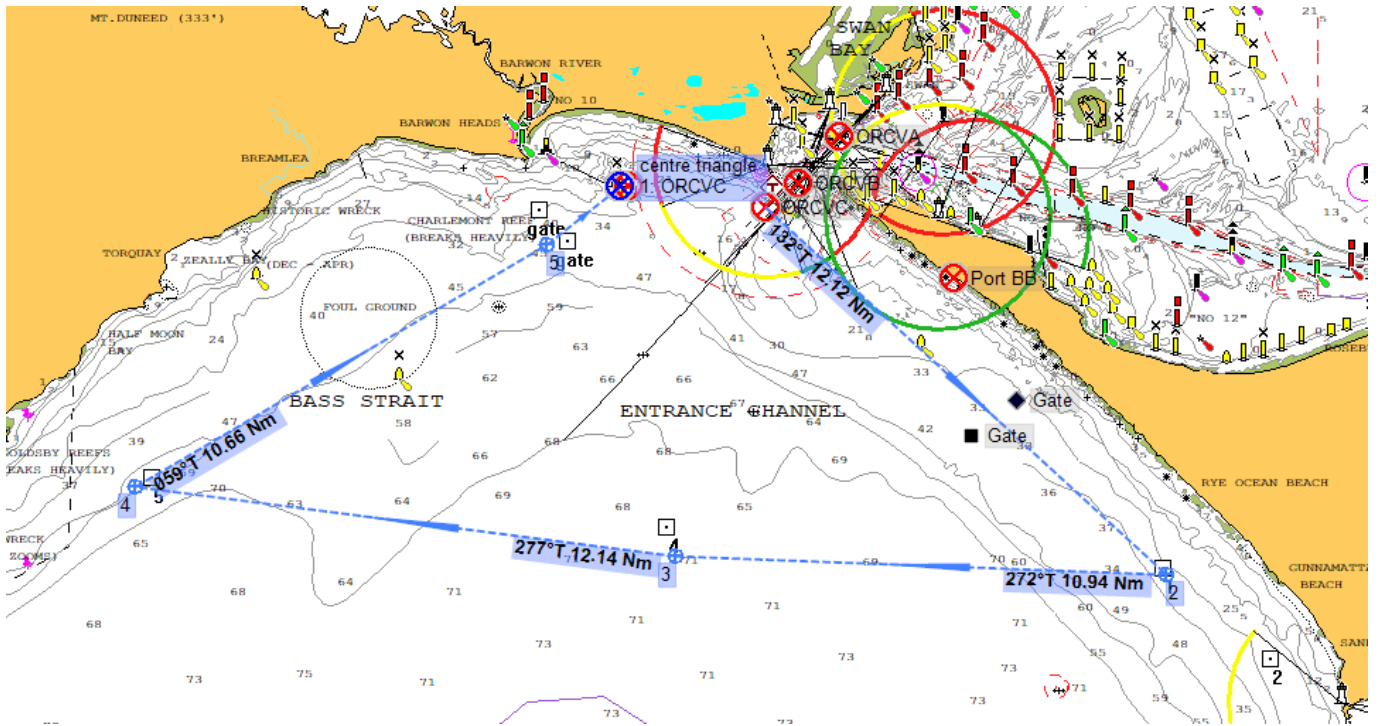
| Mark | Position | Description |
|-------|---|------------------|
| ORCVA | S38° 16.90' E144° 38.90' | Shortland Bluff |
| ORCVB | S38° 17.95' E144° 37.76' | Heads Exit |
| ORCVC | S38° 18.50' E144° 36.80' | Channel Clearing |
| ORCVD | S38° 18.00' E144° 38.67' | Big Rock |

C5.2 Yachts shown to have sailed within the bounds of this obstruction may be protested and may be penalised as described in SI 7.3.

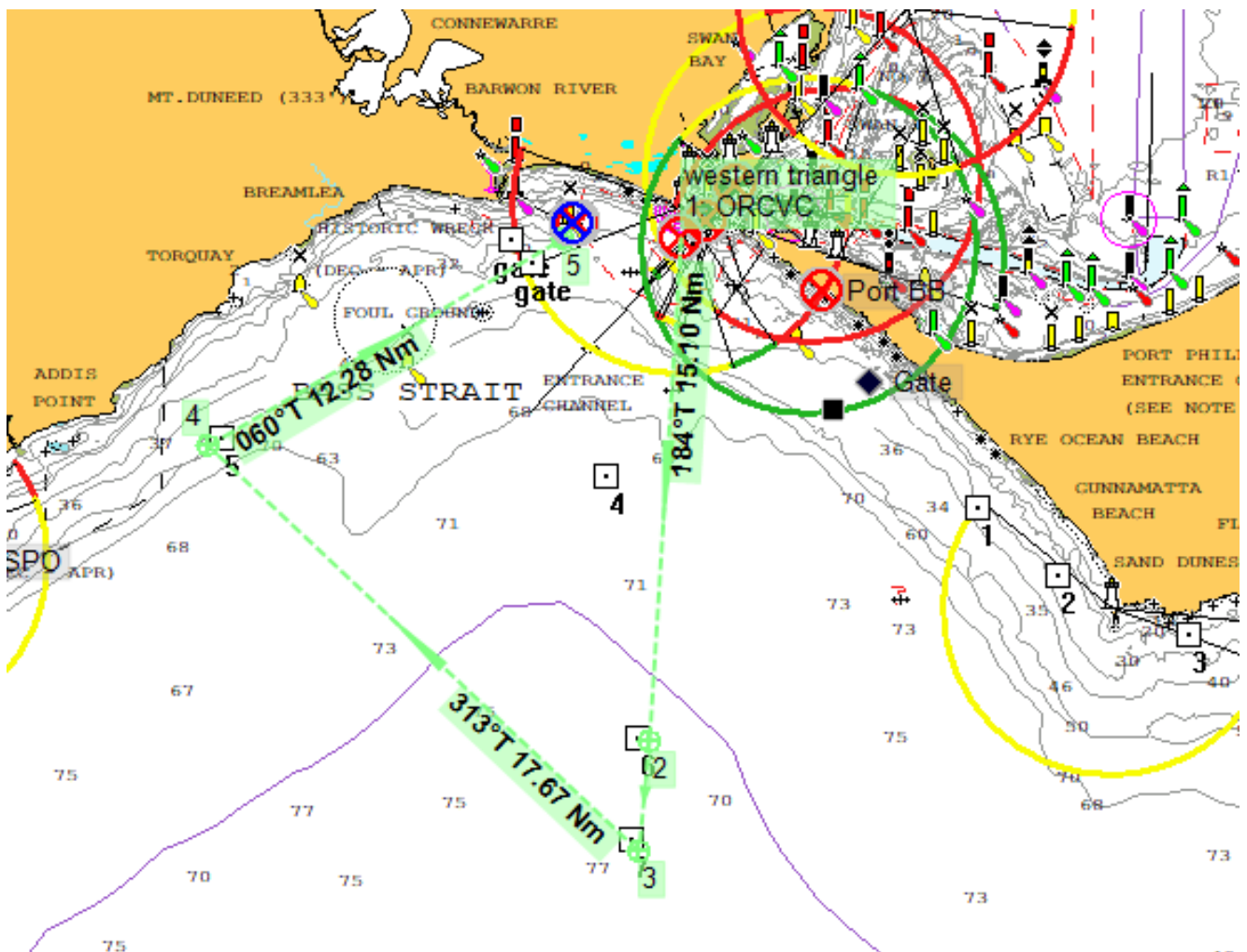
C5.3 Yachts are required to record their track through the heads using their chart plotter or similar device, and to take a photograph of this track to demonstrate compliance with the Heads Exclusion Zone.. This photograph must be submitted to the Race Director if requested.



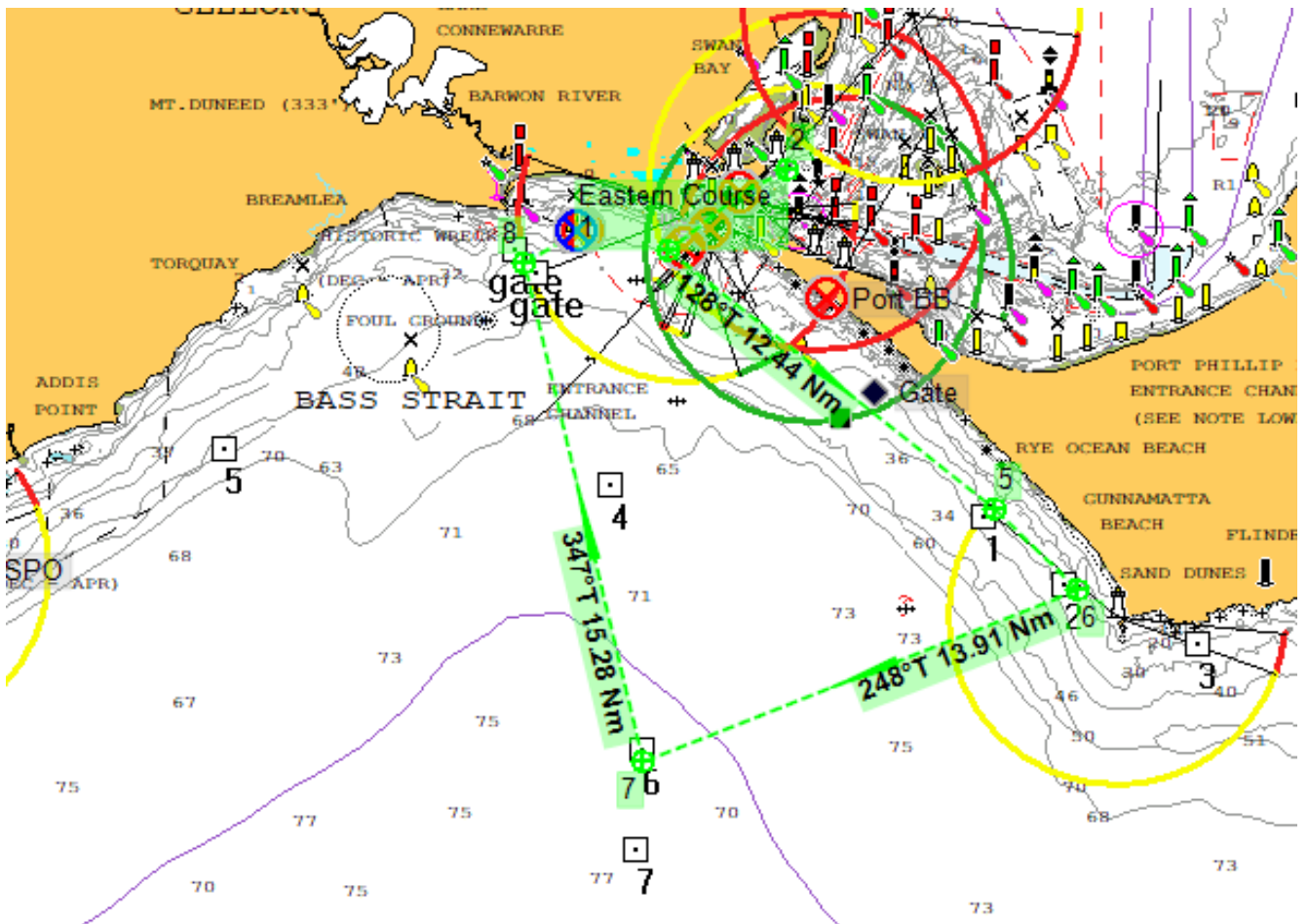
Centre Course



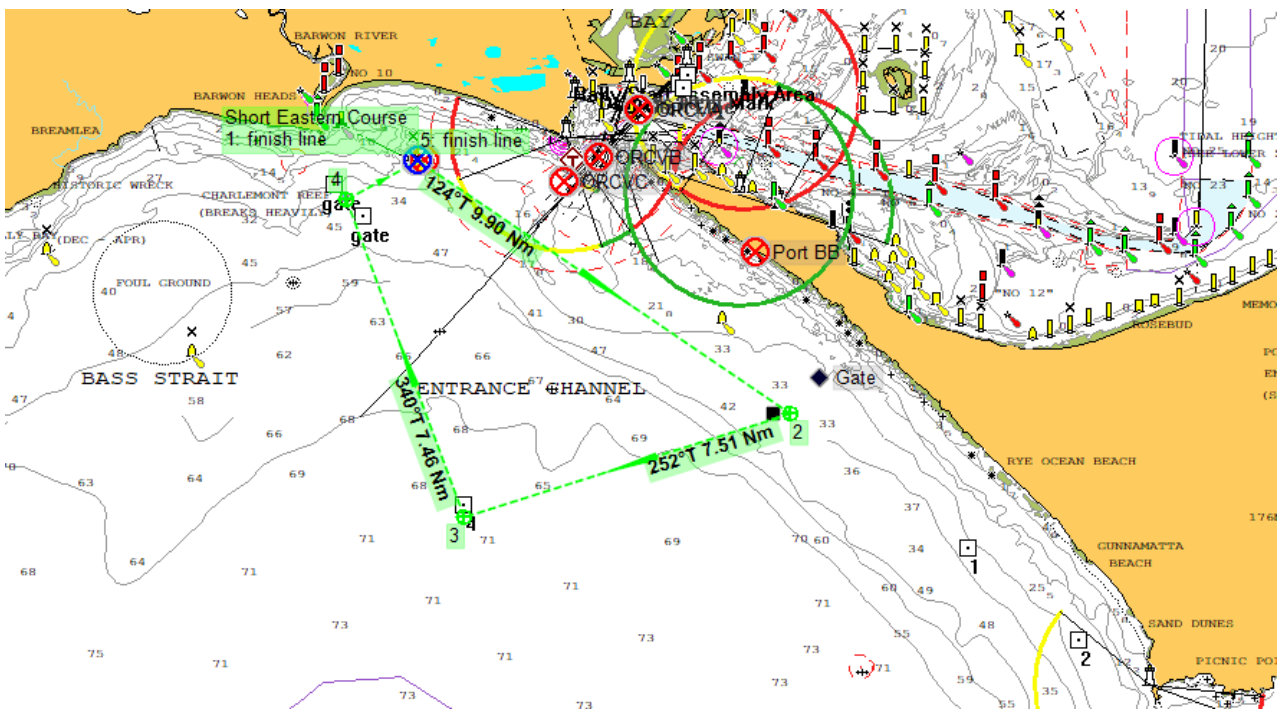
Western Course



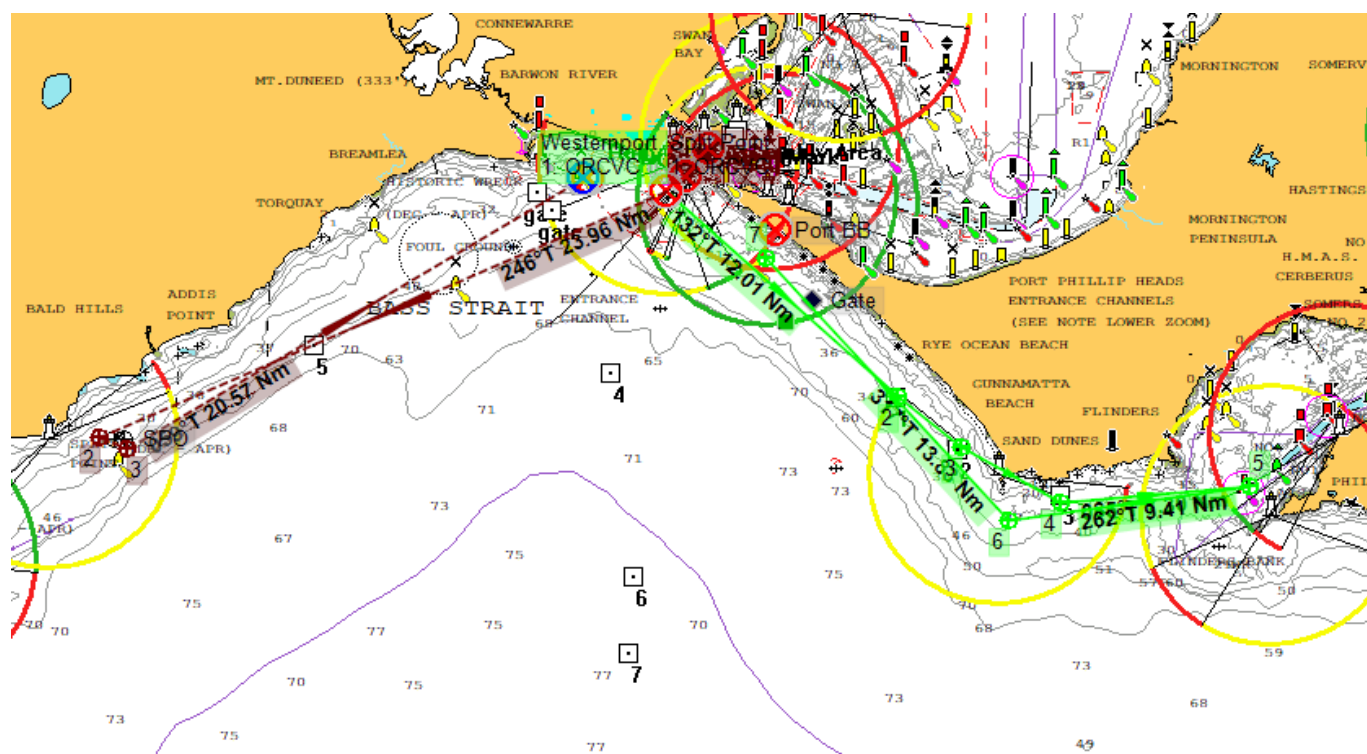
Eastern Course



Short Eastern Course



Sprint 2 Westernport and Split Point



Appendix D FINISH

THIS APPENDIX DESCRIBES THE FINISHING LINE AND FINISHING PROCEDURES. NOTE: THE POSITIONS GIVEN ARE APPROXIMATE.

D1 REPORTING

- D1.1 Each yacht is required to notify Ocean Racing on VHF Channel 82 when they cross the finish line
- D1.2 After finishing radios shall be left on VHF Channel 82 for the purpose of receiving information which may be provided by ORCV regarding conditions at the entrance to Port Phillip.

D2 FINISHING LINE – “WESTERN PORT”

- D2.1 The finishing line for the Westernport Course lies on the transit bearing approximately 16 degrees True between the most eastern of the wave buoys located off Portsea Back Beach at S38° 21.612' E144° 41. 626' and the observation room at the Portsea Surf Life Saving Club at S38° 20.060' E144° 42.180'.
- D2.2 Yachts must finish in a westerly direction leaving all of the buoys to port at a distance of not more than 0.7NM.

D3 FINISHING LINE ALL OTHER COURSES

- D3.1 The finish line for all other courses is an imaginary line extending approximately 300m between S38° 18.024' E144° 32.695' and S38° 18.024' E144° 32.901'.
- D3.2 Please note that the Finish Line is approximately 300m east of the Southern marker for the Ex HMAS Canberra dive site.
- D3.3 Yachts shall finish in a northerly direction and the committee boat will not be on station but in other respects the finish line is the same as the alternative start line shown in SI B3.2
- D3.4 If conditions warrant the Race Director may also shorten course by nominating a new

finish line located between Mark 5 and the Ex HMAS Canberra Dive Site. . The line shall be:-

- approximately 1.5nm in length
- be set at an angle of approximately 90° to the rhumb line between Virtual Mark SPO off Split Point and the southern marker of the Ex HMAS Canberra Dive Site; and
- located between two new virtual marks at positions announced by the Race Director at the end of the 1500 position report.

D4 FINISHING PROCEDURE

- D4.1 Skippers are required to record and declare their own finishing times, accurate to 1 second, and to record details of any boats which may be finishing in close proximity.

D5 DECLARATIONS

- D5.1 Each yacht is required to lodge a declaration on the form provided in *Appendix E Race Declaration* with ORCV as soon as practical, and within 12 hours of finishing the race.
- D5.2 Note that the Declaration Form includes details of the rounding/passing times for the last mark before the Finish Gate, the Finish Gate and finishing time.
- D5.3 Declarations may be handed manually or sent by email or SMS as a photograph or PDF to the Race Director.

If a skipper is uncertain as to whether a rule has been breached, they should report the circumstances on the back of this declaration form.

D6 PRESENTATION

Trophies will be presented at the ORCV 2021 Presentation Night at a place and time to be announced.

D7 TIDES

<

Appendix E RACE DECLARATION

Declaration

Submission of a completed Race Declaration within 12 hours of finishing is a requirement of the race. Failure to do so may result in disqualification.

I, [Person in charge], being in charge of the yacht [yacht name] have adhered to the rules and conditions of the 2020-21 West Offshore Products Coastal Sprint Series Race 3 and confirm..... [yacht's name] passing/rounding times for designated virtual marks and our Finish time in the table below.

| Marks Rounded or passed and Gates | Rounding/Passing/Crossing time | Yachts in Vicinity |
|-----------------------------------|--------------------------------|--------------------|
| Last Mark before Finish Gate | | |
| Finish Gate | | |
| Finish | | |

☐ Please tick if you had a safety related incident or near miss during the race. If so, someone from the Incident Management Team will contact you for details.

Any comments on the race ???.....

..... [Signature] [Date]